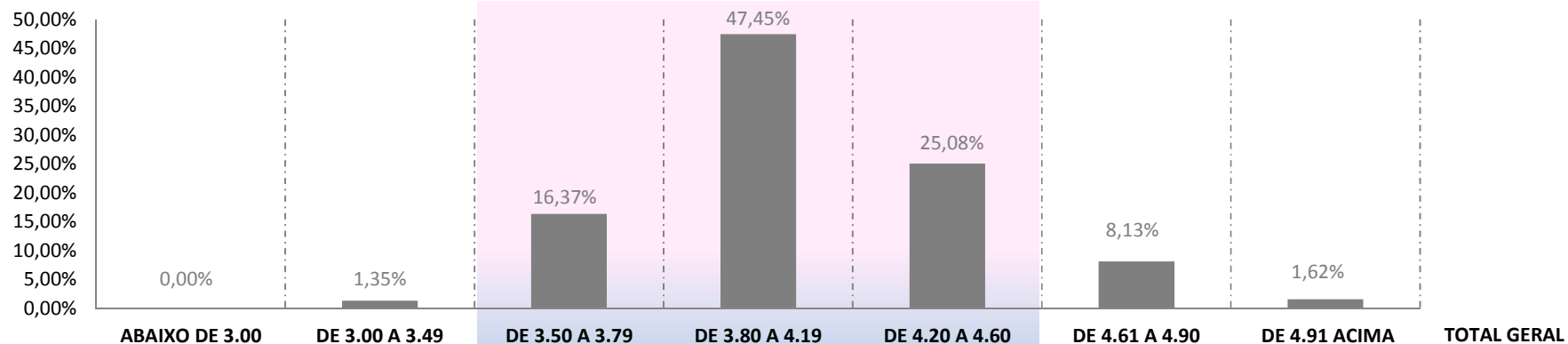
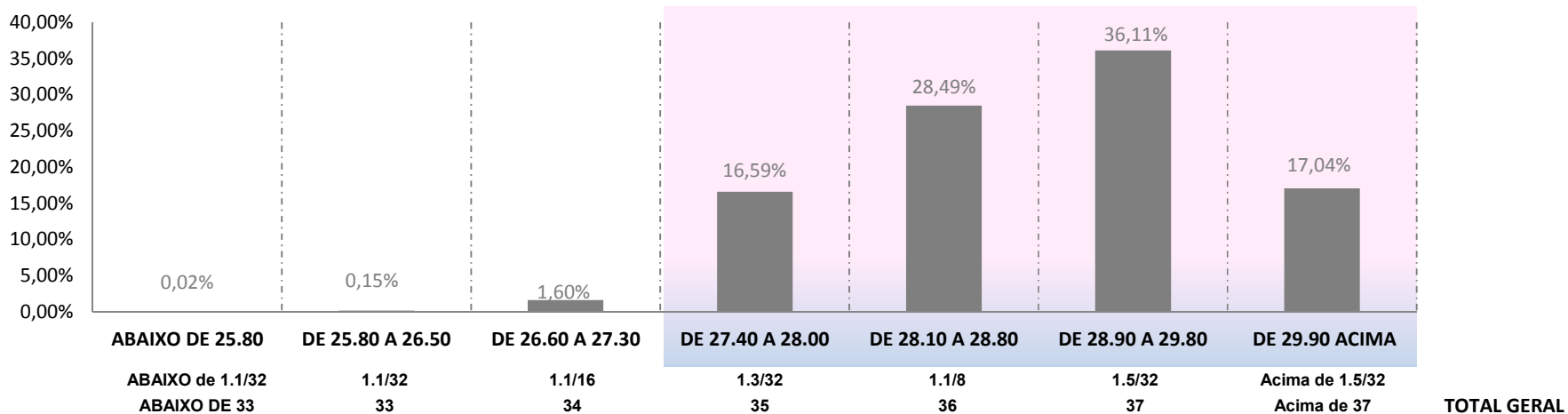


### MICRONAIRE (MIC)



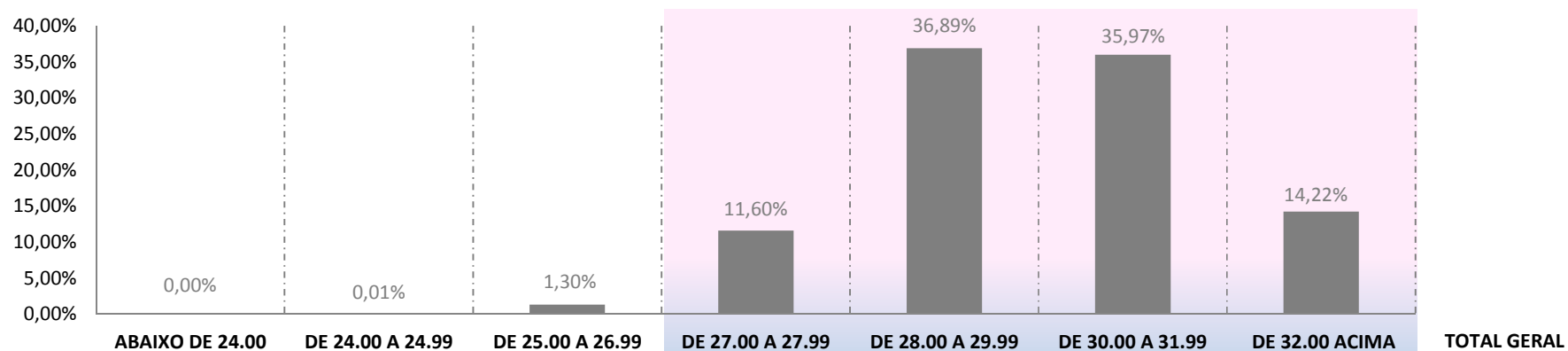
	ABAIXO DE 3.00	DE 3.00 A 3.49	DE 3.50 A 3.79	DE 3.80 A 4.19	DE 4.20 A 4.60	DE 4.61 A 4.90	DE 4.91 ACIMA	TOTAL GERAL
<b>Fardos</b>	21	14.324	173.734	503.648	266.157	86.336	17.207	<b>1.061.427</b>
<b>Média Ponderada</b>	2,94	3,38	3,67	4,00	4,36	4,75	4,99	<b>4,10</b>
<b>Porcentagem</b>	0,00%	1,35%	16,37%	47,45%	25,08%	8,13%	1,62%	<b>100,00%</b>

### COMPRIMENTO (LEN)



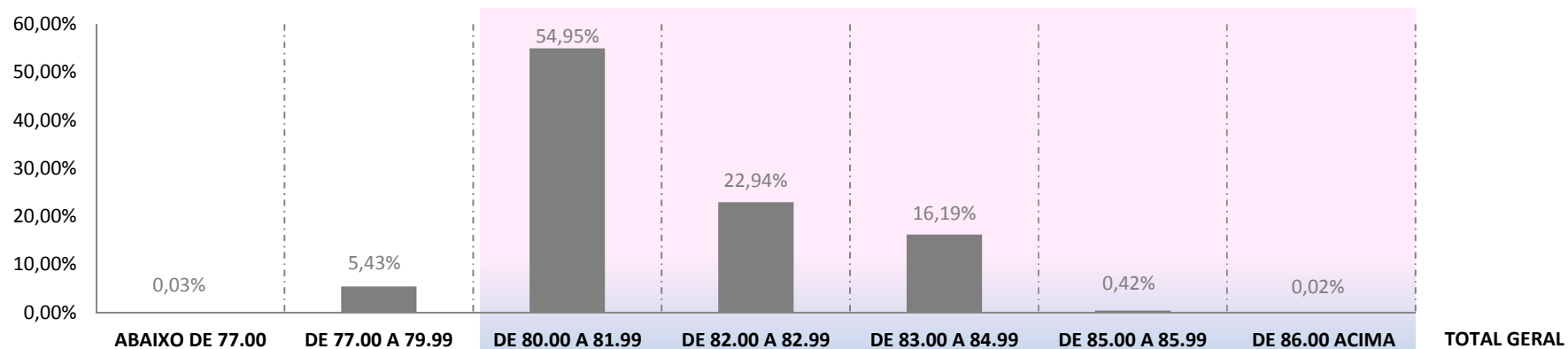
	ABAIXO DE 25.80	DE 25.80 A 26.50	DE 26.60 A 27.30	DE 27.40 A 28.00	DE 28.10 A 28.80	DE 28.90 A 29.80	DE 29.90 ACIMA	TOTAL GERAL
<b>Fardos</b>	208	1.613	16.933	176.059	302.451	383.323	180.840	<b>1.061.427</b>
<b>Média Ponderada</b>	25,39	26,34	27,12	27,76	28,51	29,36	30,39	<b>28,99</b>
<b>Porcentagem</b>	0,02%	0,15%	1,60%	16,59%	28,49%	36,11%	17,04%	<b>100,00%</b>

### RESISTÊNCIA (STR)



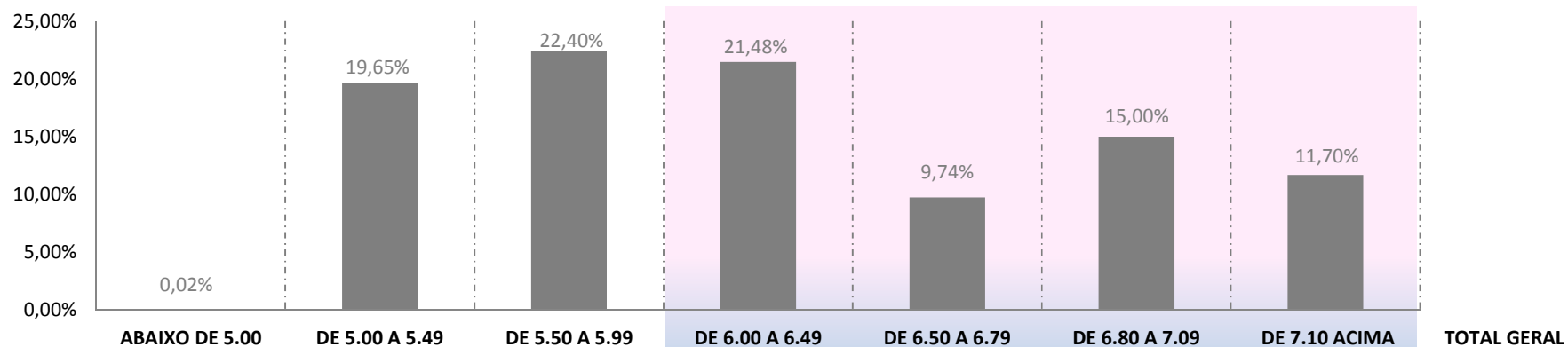
	ABAIXO DE 24.00	DE 24.00 A 24.99	DE 25.00 A 26.99	DE 27.00 A 27.99	DE 28.00 A 29.99	DE 30.00 A 31.99	DE 32.00 ACIMA	TOTAL GERAL
<b>Fardos</b>	20	119	13.812	123.110	391.584	381.815	150.967	<b>1.061.427</b>
<b>Média Ponderada</b>	23,4	24,5	26,3	27,5	29,0	30,9	32,7	<b>30,0</b>
<b>Porcentagem</b>	0,00%	0,01%	1,30%	11,60%	36,89%	35,97%	14,22%	<b>100,00%</b>

### UNIFORMIDADE (UNF)



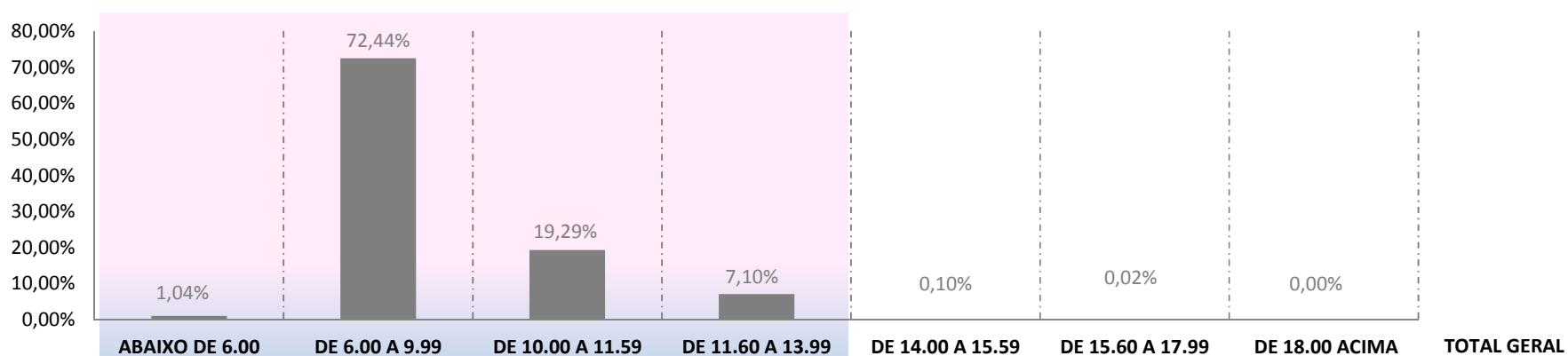
	ABAIXO DE 77.00	DE 77.00 A 79.99	DE 80.00 A 81.99	DE 82.00 A 82.99	DE 83.00 A 84.99	DE 85.00 A 85.99	DE 86.00 ACIMA	TOTAL GERAL
<b>Fardos</b>	346	57.662	583.304	243.511	171.838	4.506	260	<b>1.061.427</b>
<b>Média Ponderada</b>	76,2	79,1	80,9	82,4	83,7	85,4	86,6	<b>81,6</b>
<b>Porcentagem</b>	0,03%	5,43%	54,95%	22,94%	16,19%	0,42%	0,02%	<b>100,00%</b>

### ALONGAMENTO (ELG)



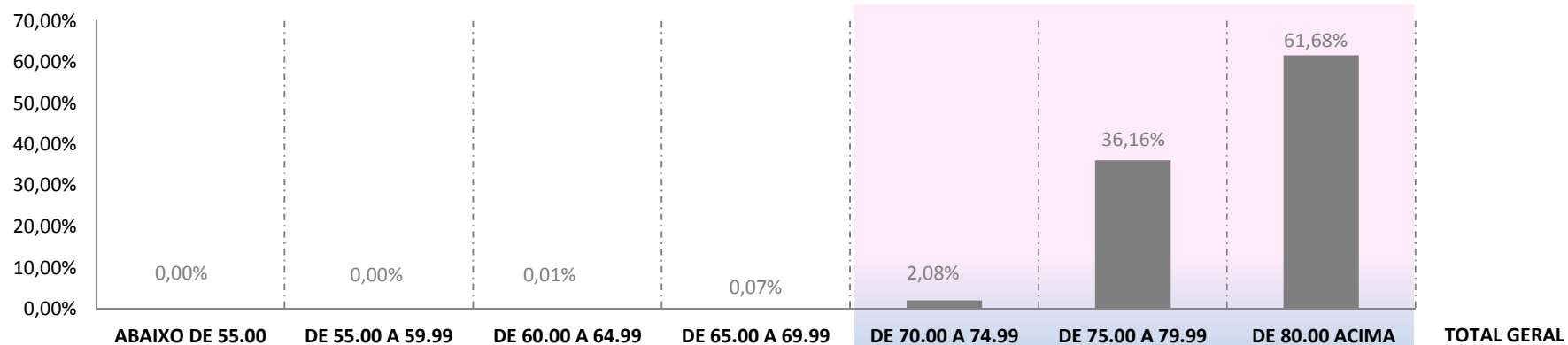
<b>Fardos</b>	179	208.617	237.770	228.000	103.426	159.243	124.192	<b>1.061.427</b>
<b>Média Ponderada</b>	4,5	5,2	5,7	6,2	6,6	6,9	7,4	<b>6,2</b>
<b>Porcentagem</b>	0,02%	19,65%	22,40%	21,48%	9,74%	15,00%	11,70%	<b>100,00%</b>

### ÍNDICE DE FIBRAS CURTAS (SFI)



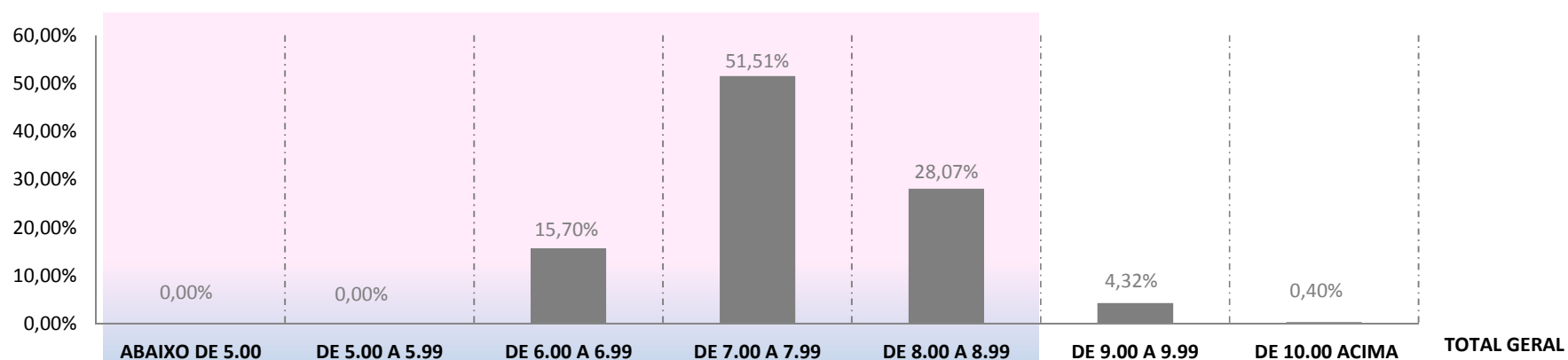
<b>Fardos</b>	11.056	768.946	204.789	75.388	1.086	162	0	<b>1.061.427</b>
<b>Média Ponderada</b>	5,4	8,4	10,6	12,2	14,6	15,7	0,0	<b>9,1</b>
<b>Porcentagem</b>	1,04%	72,44%	19,29%	7,10%	0,10%	0,02%	0,00%	<b>100,00%</b>

### GRAU DE REFLECTÂNCIA (RD)



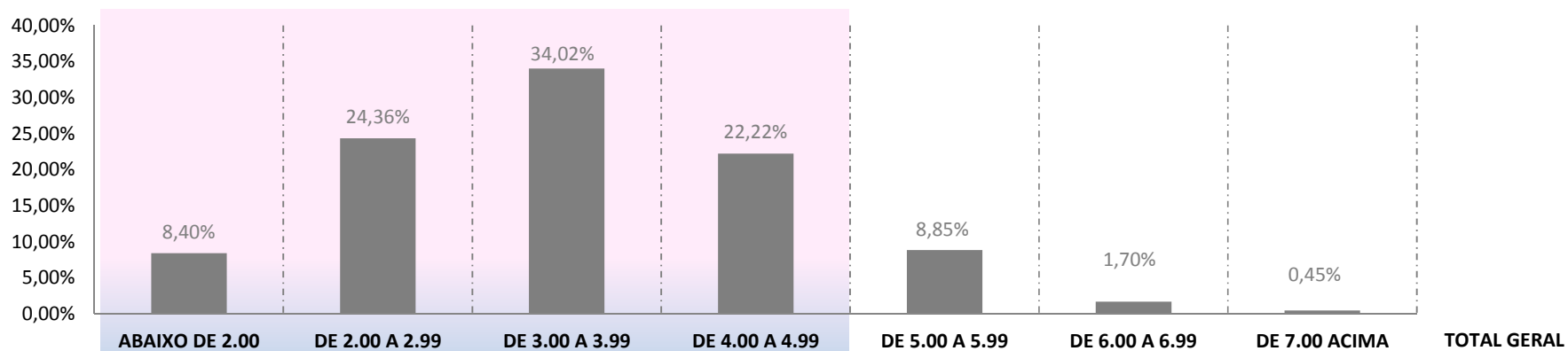
	ABAIXO DE 55.00	DE 55.00 A 59.99	DE 60.00 A 64.99	DE 65.00 A 69.99	DE 70.00 A 74.99	DE 75.00 A 79.99	DE 80.00 ACIMA	TOTAL GERAL
<b>Fardos</b>	0	0	56	752	22.122	383.823	654.674	<b>1.061.427</b>
<b>Média Ponderada</b>	0,0	0,0	64,1	67,8	73,8	78,3	81,8	<b>80,4</b>
<b>Porcentagem</b>	0,00%	0,00%	0,01%	0,07%	2,08%	36,16%	61,68%	<b>100,00%</b>

### GRAU DE AMARELAMENTO (+B)



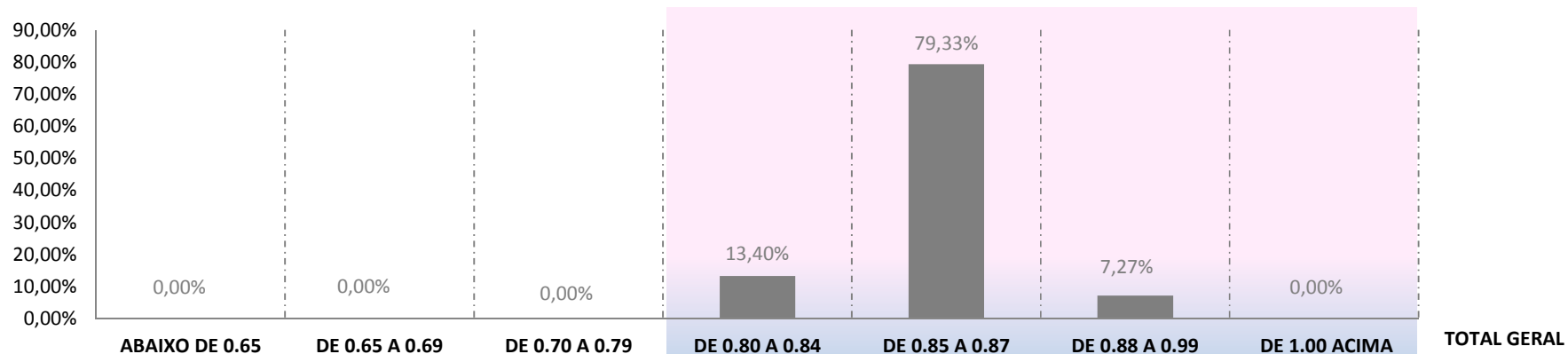
	ABAIXO DE 5.00	DE 5.00 A 5.99	DE 6.00 A 6.99	DE 7.00 A 7.99	DE 8.00 A 8.99	DE 9.00 A 9.99	DE 10.00 ACIMA	TOTAL GERAL
<b>Fardos</b>	0	1	166.596	546.758	297.969	45.889	4.214	<b>1.061.427</b>
<b>Média Ponderada</b>	0,0	5,9	6,6	7,5	8,3	9,3	10,9	<b>7,7</b>
<b>Porcentagem</b>	0,00%	0,00%	15,70%	51,51%	28,07%	4,32%	0,40%	<b>100,00%</b>

### GRAU DE FOLHA (LEAF)



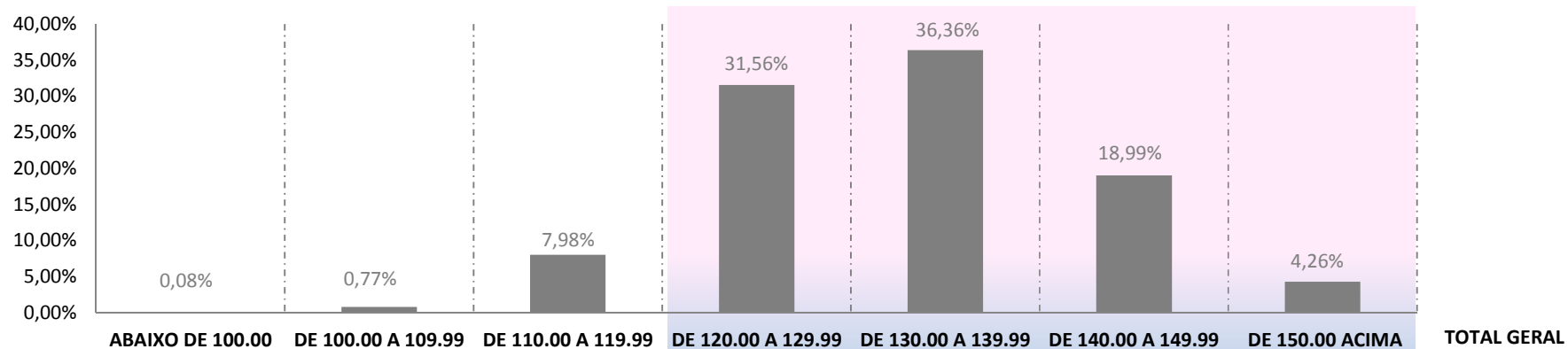
	ABAIXO DE 2.00	DE 2.00 A 2.99	DE 3.00 A 3.99	DE 4.00 A 4.99	DE 5.00 A 5.99	DE 6.00 A 6.99	DE 7.00 ACIMA	TOTAL GERAL
<b>Fardos</b>	89.133	258.546	361.135	235.887	93.974	17.995	4.757	<b>1.061.427</b>
<b>Média Ponderada</b>	1	2	3	4	5	6	7	<b>3</b>
<b>Porcentagem</b>	8,40%	24,36%	34,02%	22,22%	8,85%	1,70%	0,45%	<b>100,00%</b>

### MATURIDADE (MAT)



	ABAIXO DE 0.65	DE 0.65 A 0.69	DE 0.70 A 0.79	DE 0.80 A 0.84	DE 0.85 A 0.87	DE 0.88 A 0.99	DE 1.00 ACIMA	TOTAL GERAL
<b>Fardos</b>	0	0	13	142.224	842.019	77.171	0	<b>1.061.427</b>
<b>Média Ponderada</b>	0,00	0,00	0,78	0,84	0,86	0,88	0,00	<b>0,86</b>
<b>Porcentagem</b>	0,00%	0,00%	0,00%	13,40%	79,33%	7,27%	0,00%	<b>100,00%</b>

### ÍNDICE DE FIABILIDADE (SCI)



	ABAIXO DE 100.00	DE 100.00 A 109.99	DE 110.00 A 119.99	DE 120.00 A 129.99	DE 130.00 A 139.99	DE 140.00 A 149.99	DE 150.00 ACIMA	TOTAL GERAL
<b>Fardos</b>	819	8.120	84.742	334.957	385.965	201.587	45.237	<b>1.061.427</b>
<b>Média Ponderada</b>	96	106	116	125	134	144	153	<b>132</b>
<b>Porcentagem</b>	0,08%	0,77%	7,98%	31,56%	36,36%	18,99%	4,26%	<b>100,00%</b>