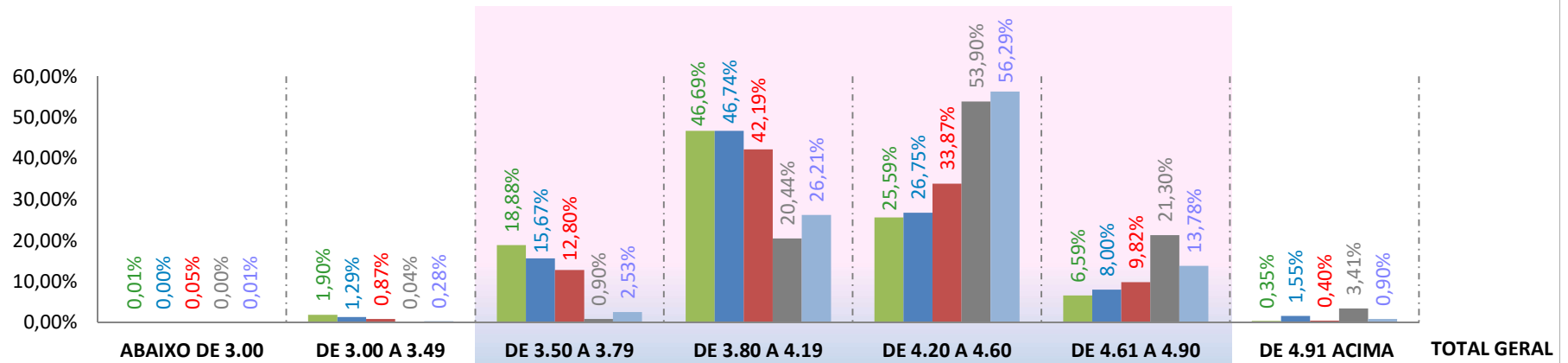


MICRONAIRE $\mu\text{g} / \text{pol}^2$ (MIC)

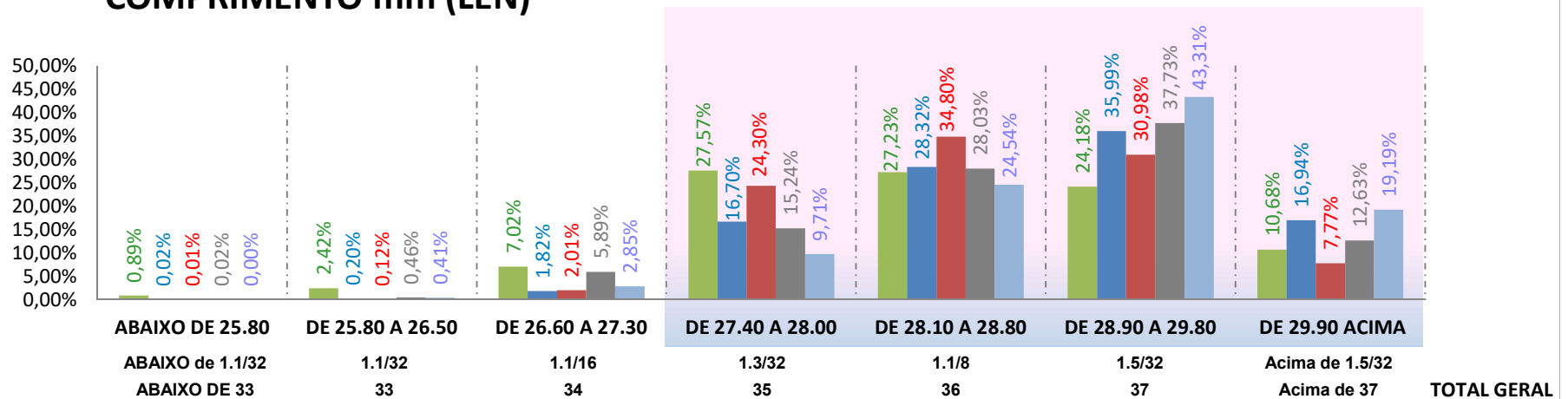
■ Safra 15/16 ■ Safra 16/17 ■ Safra 17/18 ■ Safra 18/19 ■ Safra 19/20



	ABAIXO DE 3.00	DE 3.00 A 3.49	DE 3.50 A 3.79	DE 3.80 A 4.19	DE 4.20 A 4.60	DE 4.61 A 4.90	DE 4.91 ACIMA	TOTAL GERAL
Safra 15/16	36	13.037	129.700	320.779	175.794	45.281	2.401	687.028
Safra 16/17	28	14.371	174.199	519.649	297.409	88.898	17.287	1.111.841
Safra 17/18	949	15.885	232.523	766.466	615.192	178.308	7.271	1.816.594
Safra 18/19	42	1.305	27.858	632.495	1.668.244	659.326	105.558	3.094.828
Safra 19/20	148	8.098	72.294	749.302	1.609.335	394.096	25.664	2.858.937

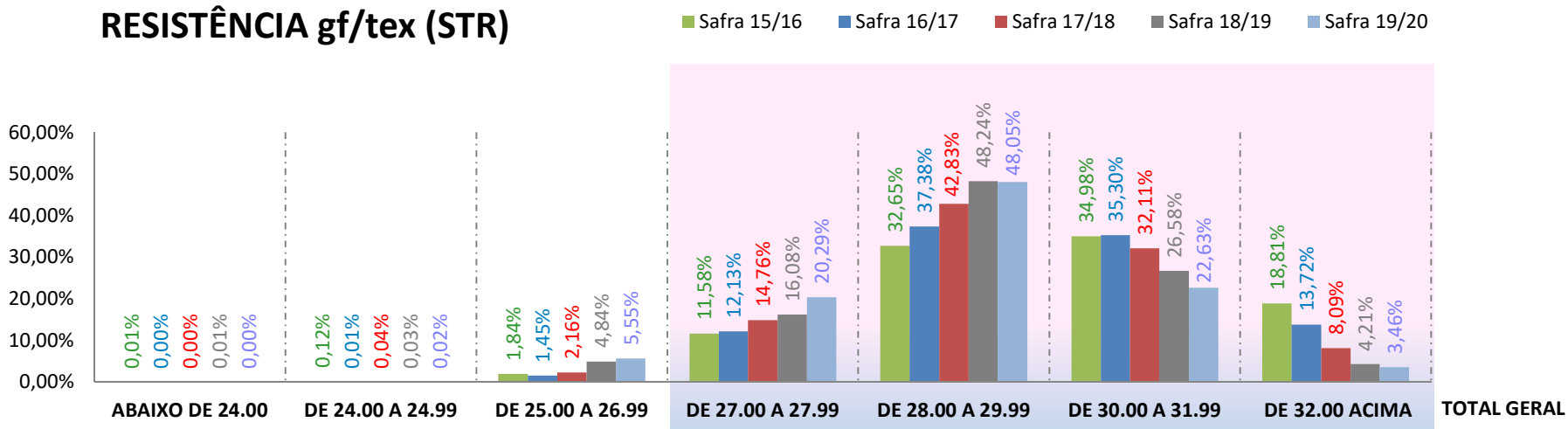
COMPRIMENTO mm (LEN)

■ Safra 15/16 ■ Safra 16/17 ■ Safra 17/18 ■ Safra 18/19 ■ Safra 19/20



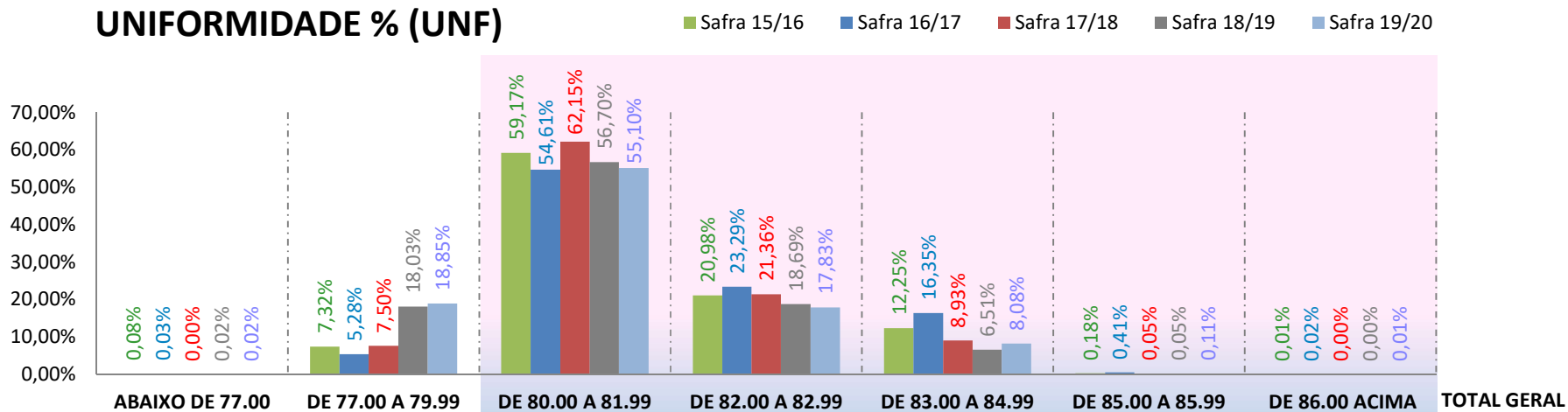
	ABAIXO de 1.1/32	1.1/32	1.1/16	1.3/32	1.1/8	1.5/32	Acima de 1.5/32	TOTAL GERAL
	ABAIXO DE 33	33	34	35	36	37	Acima de 37	
Safra 15/16	6.092	16.647	48.261	189.396	187.110	166.127	73.395	687.028
Safra 16/17	208	2.204	20.289	185.690	314.884	400.183	188.383	1.111.841
Safra 17/18	208	2.167	36.508	441.514	632.228	562.774	141.195	1.816.594
Safra 18/19	574	14.258	182.402	471.790	867.437	1.167.579	390.788	3.094.828
Safra 19/20	32	11.658	81.377	277.523	701.520	1.238.184	548.643	2.858.937

RESISTÊNCIA gf/tex (STR)



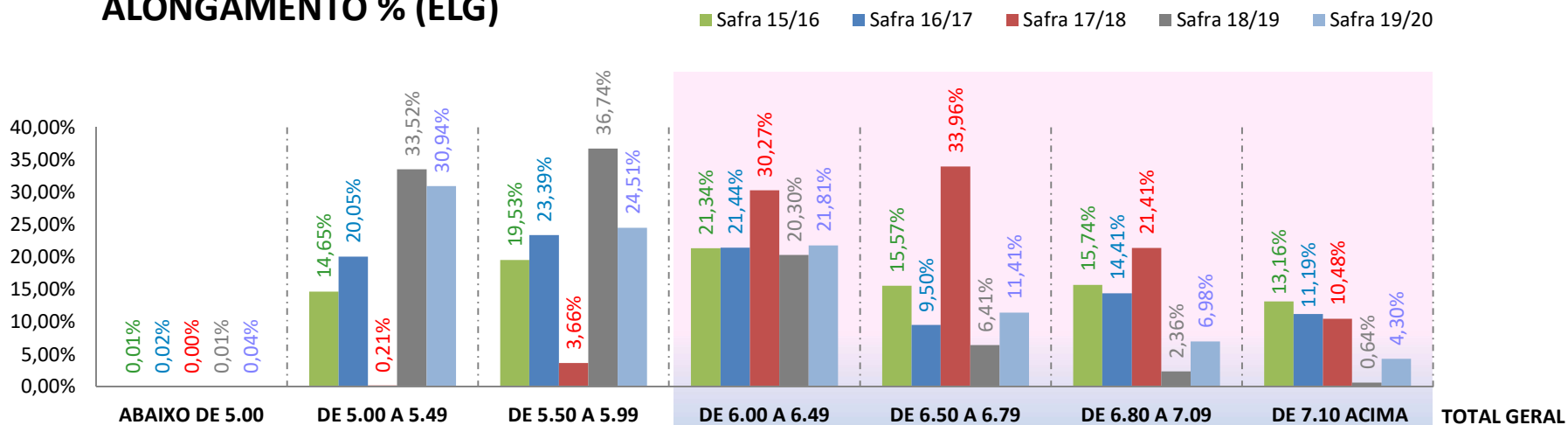
	ABAIXO DE 24.00	DE 24.00 A 24.99	DE 25.00 A 26.99	DE 27.00 A 27.99	DE 28.00 A 29.99	DE 30.00 A 31.99	DE 32.00 ACIMA	TOTAL GERAL
Safra 15/16	87	849	12.640	79.528	224.347	240.330	129.247	687.028
Safra 16/17	24	126	16.149	134.869	415.620	392.509	152.544	1.111.841
Safra 17/18	45	809	39.248	268.178	778.001	583.283	147.030	1.816.594
Safra 18/19	261	1.021	149.876	497.655	1.492.895	822.728	130.392	3.094.828
Safra 19/20	12	637	158.642	580.144	1.373.727	646.864	98.911	2.858.937

UNIFORMIDADE % (UNF)



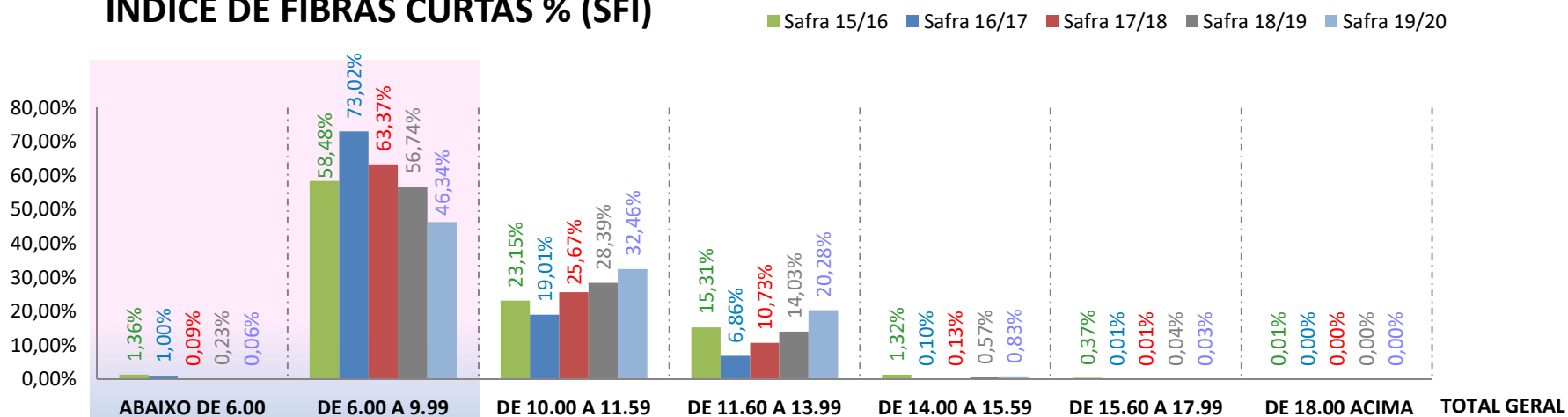
	ABAIXO DE 77.00	DE 77.00 A 79.99	DE 80.00 A 81.99	DE 82.00 A 82.99	DE 83.00 A 84.99	DE 85.00 A 85.99	DE 86.00 ACIMA	TOTAL GERAL
Safra 15/16	564	50.322	406.495	144.134	84.160	1.266	87	687.028
Safra 16/17	346	58.677	607.211	258.933	181.838	4.576	260	1.111.841
Safra 17/18	71	136.298	1.129.073	387.977	162.304	845	26	1.816.594
Safra 18/19	619	558.054	1.754.755	578.435	201.355	1.490	120	3.094.828
Safra 19/20	549	538.809	1.575.404	509.613	231.054	3.115	393	2.858.937

ALONGAMENTO % (ELG)



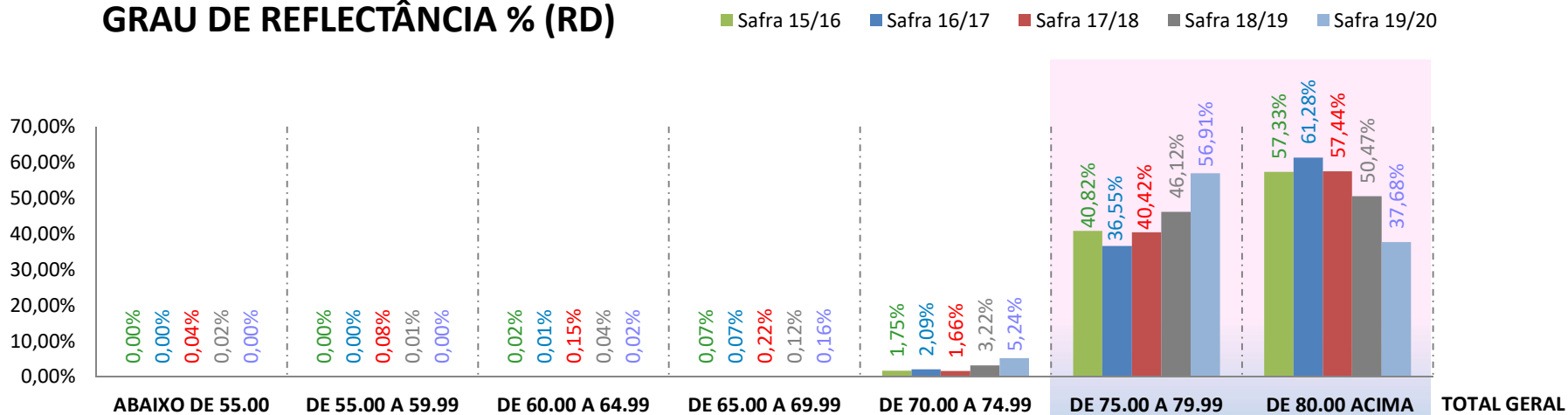
	Safra 15/16	Safra 16/17	Safra 17/18	Safra 18/19	Safra 19/20	TOTAL GERAL
ABAIXO DE 5.00	73	179	0	451	1.220	
DE 5.00 A 5.49	100.619	222.929	3.840	1.037.524	884.503	
DE 5.50 A 5.99	134.154	260.100	66.465	1.137.121	700.820	
DE 6.00 A 6.49	146.640	238.354	549.966	628.396	623.612	
DE 6.50 A 6.79	106.992	105.647	616.992	198.381	326.326	
DE 6.80 A 7.09	108.114	160.171	389.001	73.185	199.609	
DE 7.10 ACIMA	90.436	124.461	190.330	19.770	122.847	
TOTAL GERAL	687.028	1.111.841	1.816.594	3.094.828	2.858.937	

ÍNDICE DE FIBRAS CURTAS % (SFI)



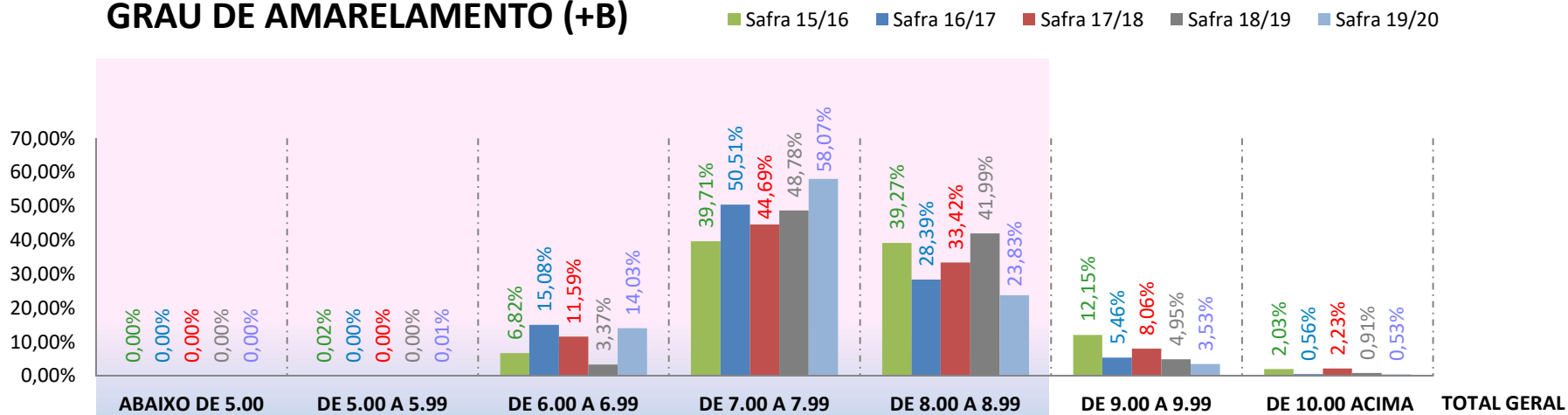
	Safra 15/16	Safra 16/17	Safra 17/18	Safra 18/19	Safra 19/20	TOTAL GERAL
ABAIXO DE 6.00	9.349	11.100	1.669	7.267	1.624	
DE 6.00 A 9.99	401.780	811.826	1.151.180	1.756.100	1.324.896	
DE 10.00 A 11.59	159.029	211.342	466.382	878.490	927.987	
DE 11.60 A 13.99	105.167	76.325	194.845	434.220	579.916	
DE 14.00 A 15.59	9.093	1.086	2.358	17.493	23.650	
DE 15.60 A 17.99	2.516	162	159	1.191	861	
DE 18.00 ACIMA	94	0	1	67	3	
TOTAL GERAL	687.028	1.111.841	1.816.594	3.094.828	2.858.937	

GRAU DE REFLECTÂNCIA % (RD)



	ABAIXO DE 55.00	DE 55.00 A 59.99	DE 60.00 A 64.99	DE 65.00 A 69.99	DE 70.00 A 74.99	DE 75.00 A 79.99	DE 80.00 ACIMA	TOTAL GERAL
Safra 15/16	0	13	167	481	12.039	280.471	393.857	687.028
Safra 16/17	0	0	56	754	23.237	406.417	681.377	1.111.841
Safra 17/18	641	1.491	2.647	3.920	30.228	734.275	1.043.392	1.816.594
Safra 18/19	467	441	1.166	3.851	99.563	1.427.440	1.561.900	3.094.828
Safra 19/20	0	13	511	4.464	149.758	1.626.935	1.077.256	2.858.937

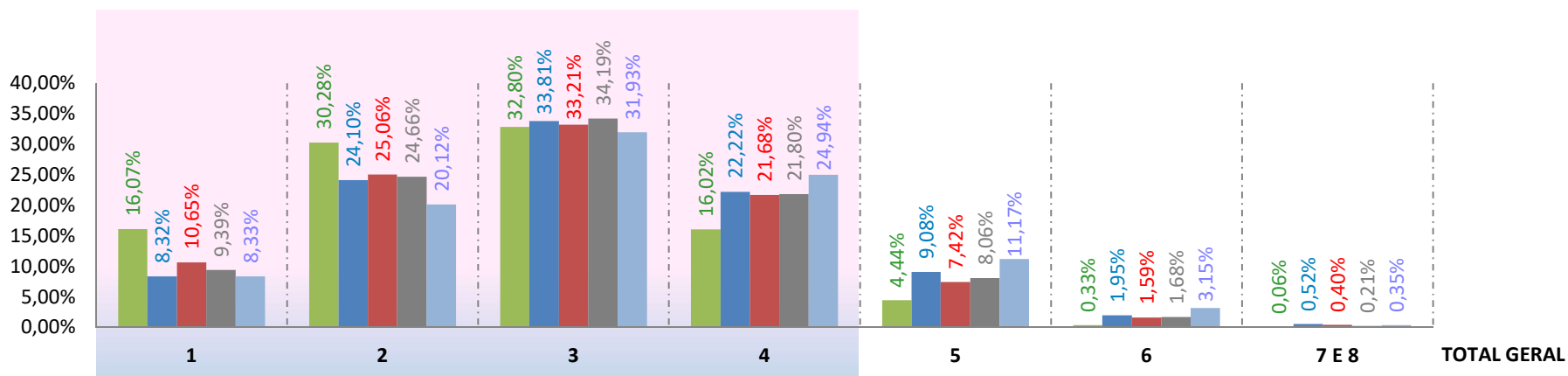
GRAU DE AMARELAMENTO (+B)



	ABAIXO DE 5.00	DE 5.00 A 5.99	DE 6.00 A 6.99	DE 7.00 A 7.99	DE 8.00 A 8.99	DE 9.00 A 9.99	DE 10.00 ACIMA	TOTAL GERAL
Safra 15/16	0	171	46.825	272.831	269.773	83.468	13.960	687.028
Safra 16/17	0	1	167.704	561.539	315.673	60.742	6.182	1.111.841
Safra 17/18	1	73	210.542	811.919	607.073	146.462	40.524	1.816.594
Safra 18/19	1	75	104.210	1.509.515	1.299.654	153.130	28.243	3.094.828
Safra 19/20	10	338	401.088	1.660.221	681.202	100.972	15.106	2.858.937

GRAU DE FOLHA (LEAF)

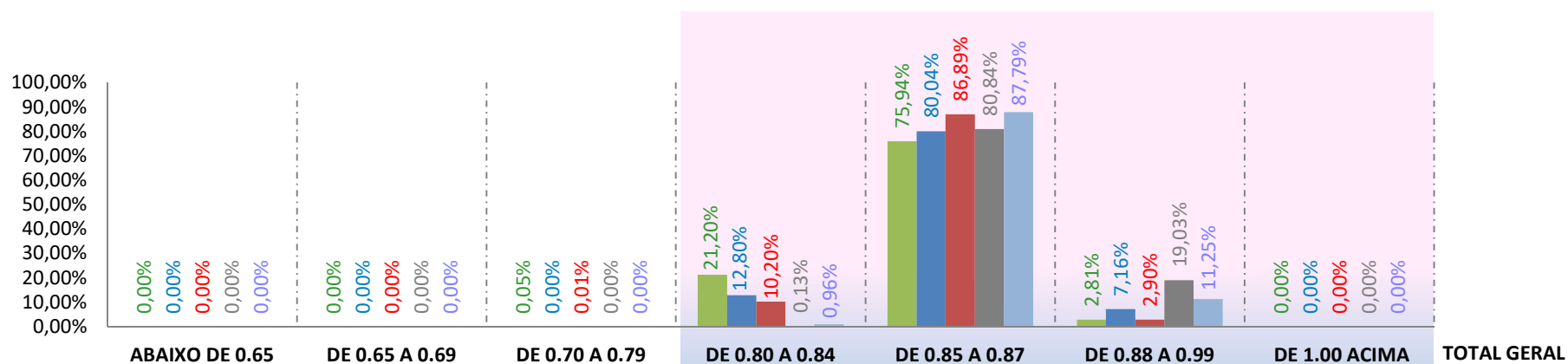
■ Safra 15/16 ■ Safra 16/17 ■ Safra 17/18 ■ Safra 18/19 ■ Safra 19/20



	1	2	3	4	5	6	7 E 8	TOTAL GERAL
Safra 15/16	110.391	208.053	225.323	110.055	30.472	2.298	436	687.028
Safra 16/17	92.464	267.994	375.943	247.011	100.900	21.718	5.811	1.111.841
Safra 17/18	193.405	455.240	603.288	393.822	134.712	28.847	7.280	1.816.594
Safra 18/19	290.632	763.315	1.058.127	674.754	249.594	51.920	6.486	3.094.828
Safra 19/20	238.206	575.297	912.802	713.115	319.448	90.184	9.885	2.858.937

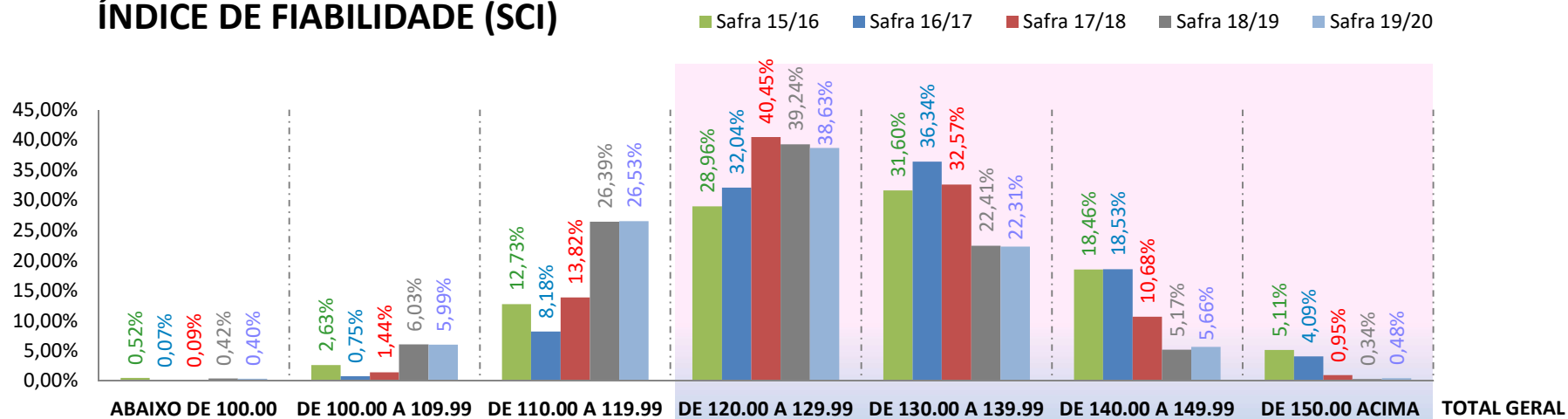
MATURIDADE (MAT)

■ Safra 15/16 ■ Safra 16/17 ■ Safra 17/18 ■ Safra 18/19 ■ Safra 19/20



	ABAIXO DE 0.65	DE 0.65 A 0.69	DE 0.70 A 0.79	DE 0.80 A 0.84	DE 0.85 A 0.87	DE 0.88 A 0.99	DE 1.00 ACIMA	TOTAL GERAL
Safra 15/16	0	0	328	145.660	521.730	19.310	0	687.028
Safra 16/17	0	0	13	142.326	889.878	79.624	0	1.111.841
Safra 17/18	0	0	106	185.329	1.578.512	52.647	0	1.816.594
Safra 18/19	0	0	36	4.018	2.501.759	589.015	0	3.094.828
Safra 19/20	0	0	18	27.519	2.509.899	321.501	0	2.858.937

ÍNDICE DE FIABILIDADE (SCI)



	ABAIXO DE 100.00	DE 100.00 A 109.99	DE 110.00 A 119.99	DE 120.00 A 129.99	DE 130.00 A 139.99	DE 140.00 A 149.99	DE 150.00 ACIMA	TOTAL GERAL
Safra 15/16	3.580	18.057	87.455	198.937	217.081	126.822	35.096	687.029
Safra 16/17	820	8.393	90.946	356.205	403.994	206.012	45.471	1.111.841
Safra 17/18	1.674	26.230	251.057	734.733	591.611	193.966	17.323	1.816.594
Safra 18/19	12.968	186.671	816.601	1.214.366	693.688	159.861	10.673	3.094.828
Safra 19/20	11.502	171.235	758.485	1.104.399	637.790	161.675	13.851	2.858.937