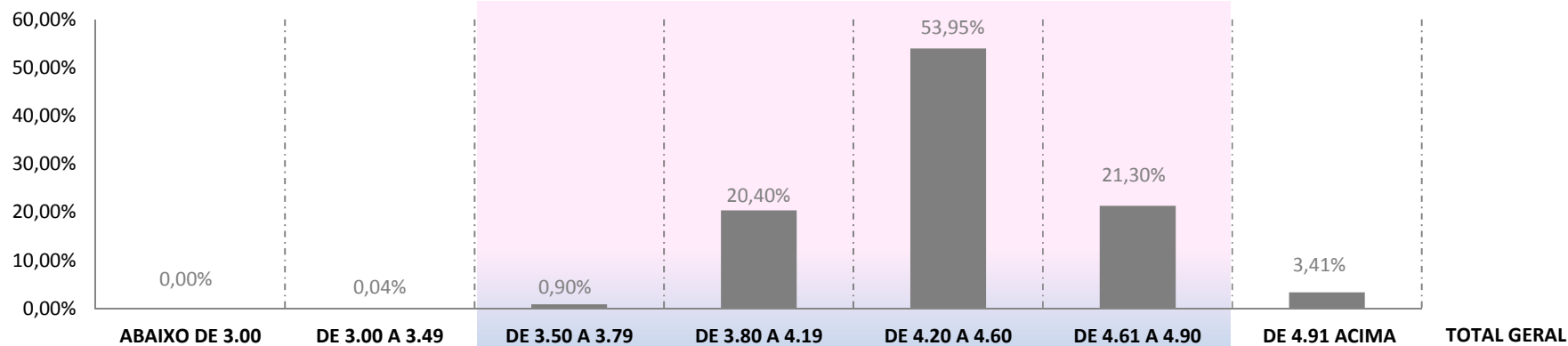
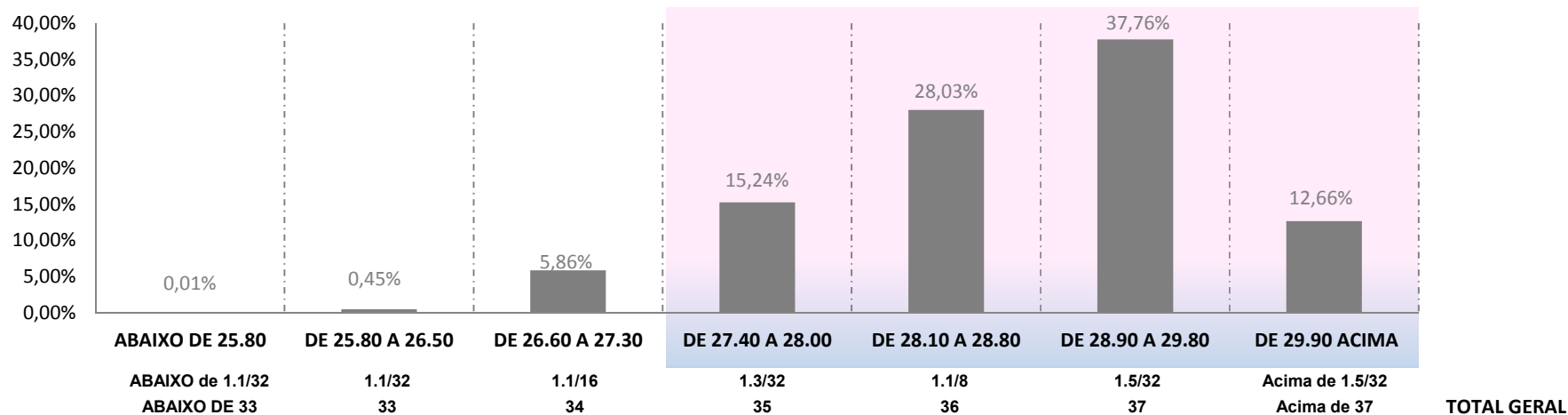


### MICRONAIRE $\mu\text{g} / \text{pol}^2$ (MIC)



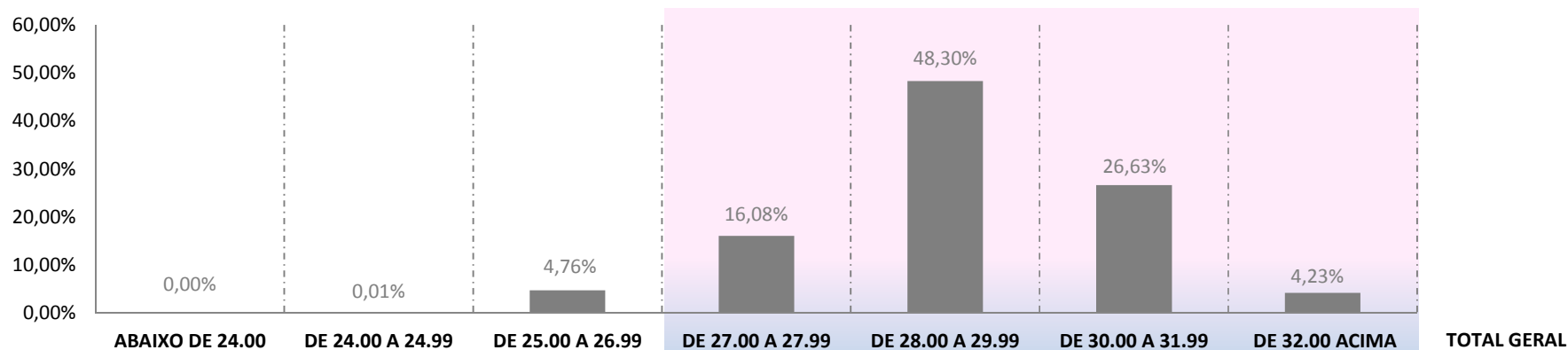
<b>Fardos</b>	42	1.305	27.843	629.240	1.664.214	657.232	105.089	<b>3.084.965</b>
<b>Média Ponderada</b>	2,94	3,32	3,70	4,07	4,40	4,73	5,00	<b>4,41</b>
<b>Porcentagem</b>	0,00%	0,04%	0,90%	20,40%	53,95%	21,30%	3,41%	<b>100,00%</b>

### COMPRIMENTO mm (LEN)



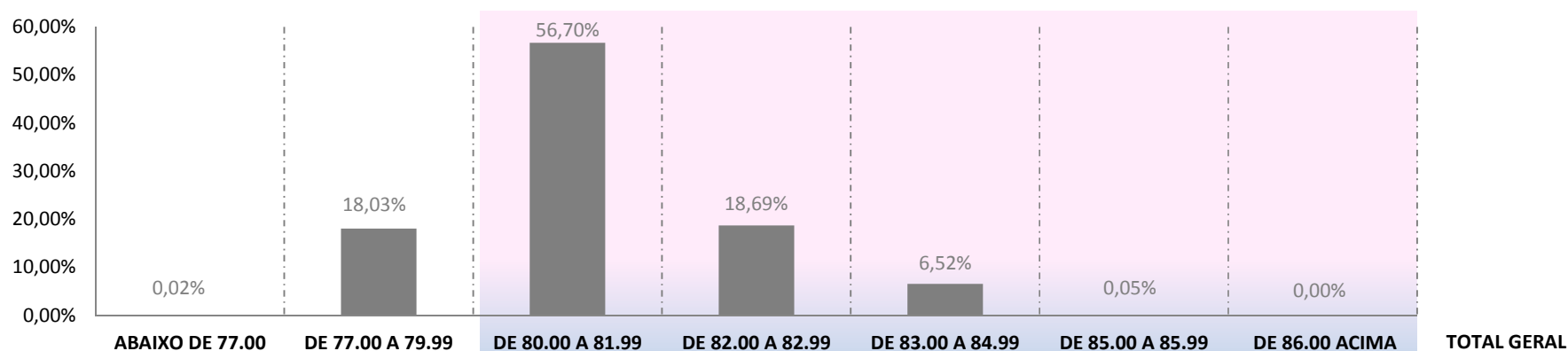
<b>Fardos</b>	400	13.820	180.786	470.202	864.592	1.164.734	390.431	<b>3.084.965</b>
<b>Média Ponderada</b>	25,29	26,41	27,11	27,76	28,52	29,36	30,30	<b>28,85</b>
<b>Porcentagem</b>	0,01%	0,45%	5,86%	15,24%	28,03%	37,76%	12,66%	<b>100,00%</b>

### RESISTÊNCIA gf/tex (STR)



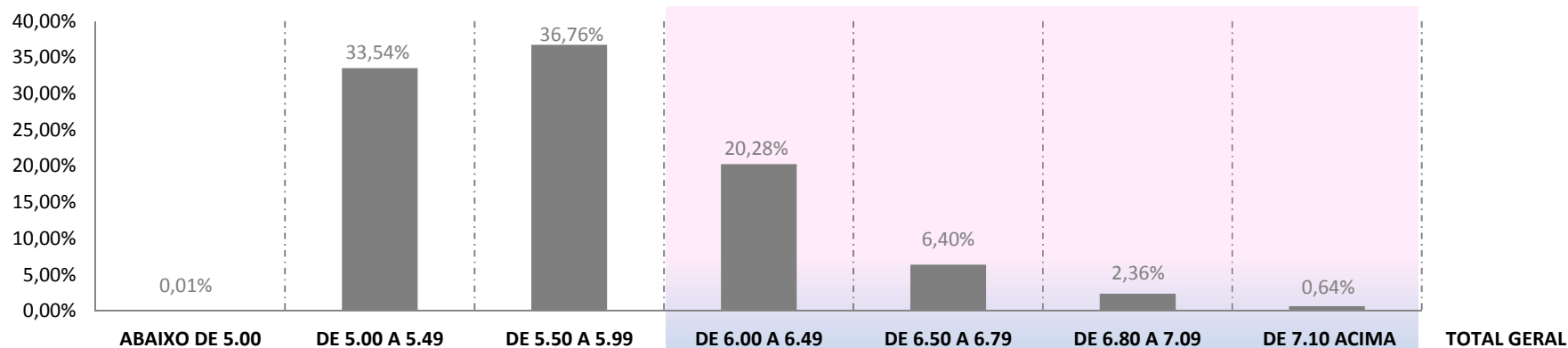
	ABAIXO DE 24.00	DE 24.00 A 24.99	DE 25.00 A 26.99	DE 27.00 A 27.99	DE 28.00 A 29.99	DE 30.00 A 31.99	DE 32.00 ACIMA	TOTAL GERAL
<b>Fardos</b>	52	289	146.884	495.912	1.489.958	821.495	130.375	<b>3.084.965</b>
<b>Média Ponderada</b>	22,8	24,5	26,4	27,5	29,0	30,7	32,6	<b>29,2</b>
<b>Porcentagem</b>	0,00%	0,01%	4,76%	16,08%	48,30%	26,63%	4,23%	<b>100,00%</b>

### UNIFORMIDADE % (UNF)



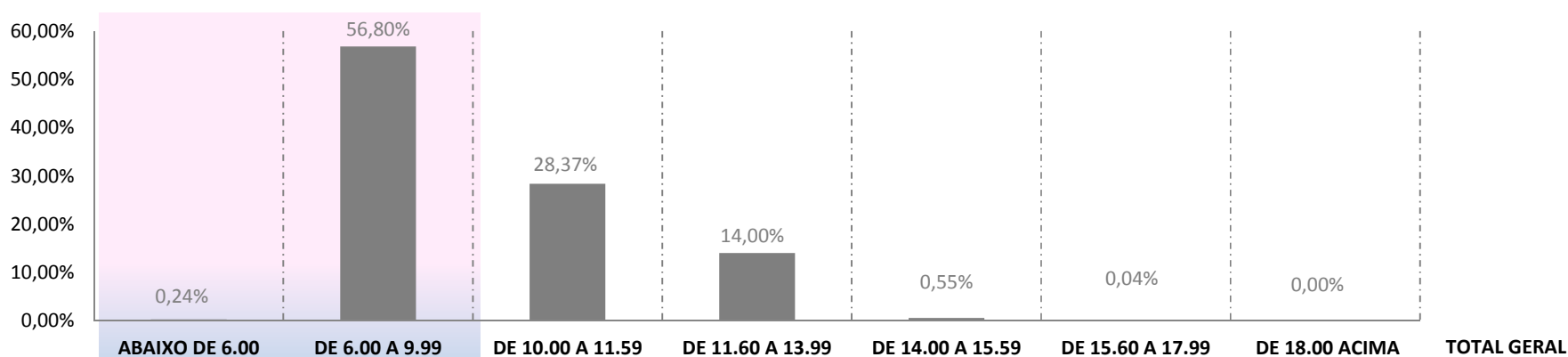
	ABAIXO DE 77.00	DE 77.00 A 79.99	DE 80.00 A 81.99	DE 82.00 A 82.99	DE 83.00 A 84.99	DE 85.00 A 85.99	DE 86.00 ACIMA	TOTAL GERAL
<b>Fardos</b>	516	556.123	1.749.028	576.600	201.088	1.490	120	<b>3.084.965</b>
<b>Média Ponderada</b>	76,5	79,2	81,0	82,4	83,5	85,3	86,6	<b>81,1</b>
<b>Porcentagem</b>	0,02%	18,03%	56,70%	18,69%	6,52%	0,05%	0,00%	<b>100,00%</b>

### ALONGAMENTO % (ELG)



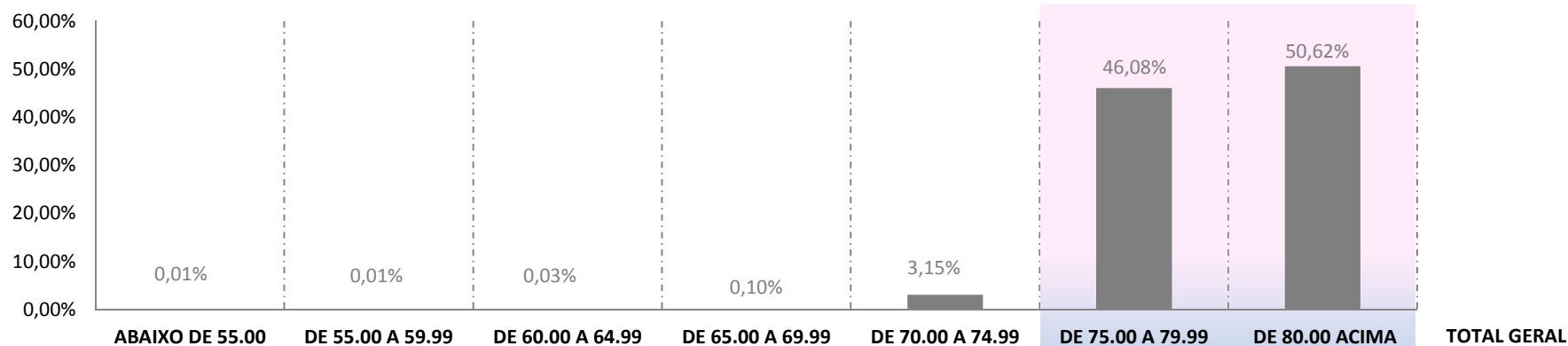
<b>Fardos</b>	451	1.034.634	1.133.997	625.732	197.521	72.865	19.765	<b>3.084.965</b>
<b>Média Ponderada</b>	4,7	5,2	5,7	6,2	6,6	6,9	7,2	<b>5,7</b>
<b>Porcentagem</b>	0,01%	33,54%	36,76%	20,28%	6,40%	2,36%	0,64%	<b>100,00%</b>

### ÍNDICE DE FIBRAS CURTAS % (SFI)



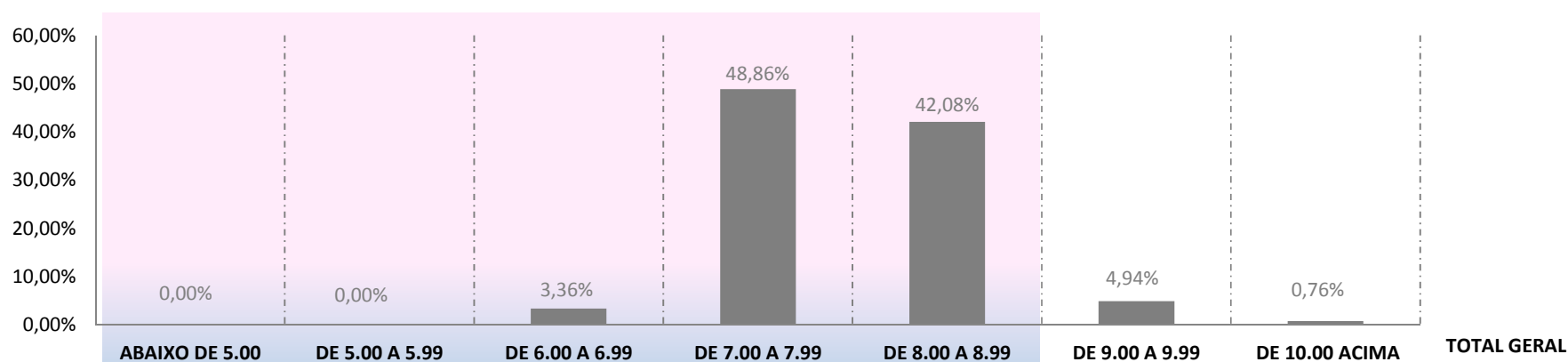
<b>Fardos</b>	7.267	1.752.208	875.315	431.988	17.102	1.085	0	<b>3.084.965</b>
<b>Média Ponderada</b>	5,5	8,7	10,7	12,4	14,5	16,0	0,0	<b>9,8</b>
<b>Porcentagem</b>	0,24%	56,80%	28,37%	14,00%	0,55%	0,04%	0,00%	<b>100,00%</b>

### GRAU DE REFLECTÂNCIA % (RD)



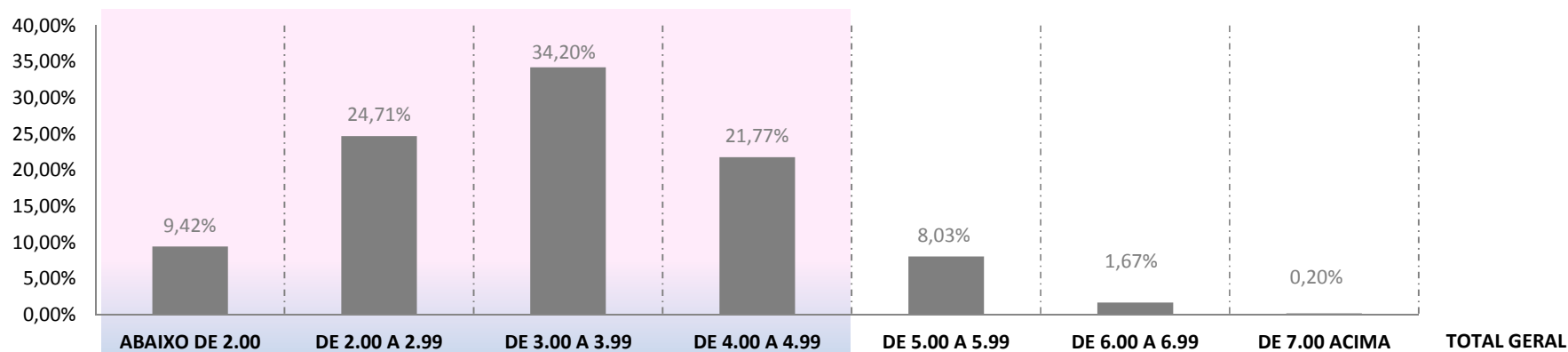
<b>Fardos</b>	267	269	901	3.048	97.094	1.421.638	1.561.748	<b>3.084.965</b>
<b>Média Ponderada</b>	51,3	57,5	62,7	67,8	73,7	78,3	81,4	<b>79,7</b>
<b>Porcentagem</b>	0,01%	0,01%	0,03%	0,10%	3,15%	46,08%	50,62%	<b>100,00%</b>

### GRAU DE AMARELAMENTO (+B)



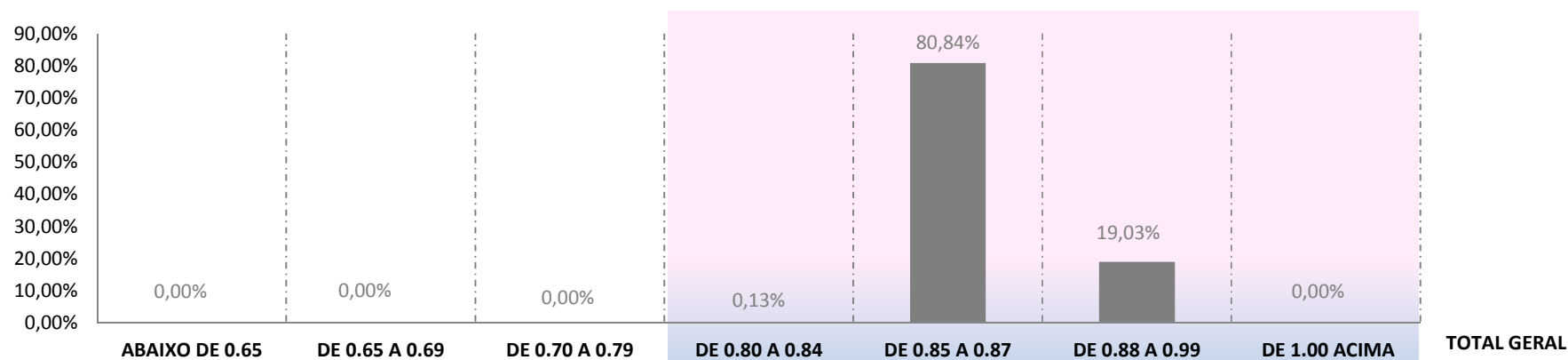
<b>Fardos</b>	1	75	103.549	1.507.290	1.298.134	152.380	23.536	<b>3.084.965</b>
<b>Média Ponderada</b>	4,8	5,7	6,7	7,5	8,3	9,3	11,1	<b>8,0</b>
<b>Porcentagem</b>	0,00%	0,00%	3,36%	48,86%	42,08%	4,94%	0,76%	<b>100,00%</b>

### GRAU DE FOLHA (LEAF)



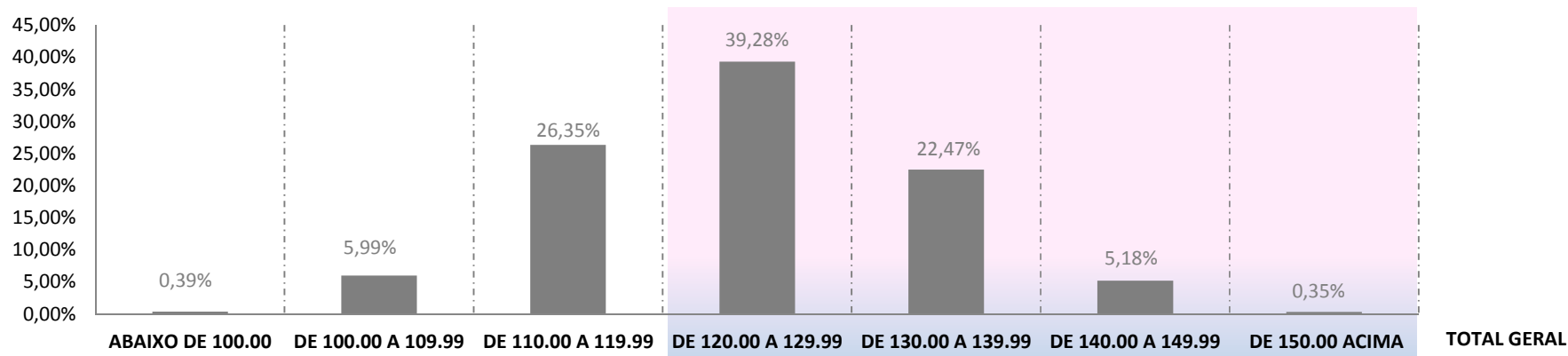
	ABAIXO DE 2.00	DE 2.00 A 2.99	DE 3.00 A 3.99	DE 4.00 A 4.99	DE 5.00 A 5.99	DE 6.00 A 6.99	DE 7.00 ACIMA	TOTAL GERAL
<b>Fardos</b>	290.470	762.367	1.055.014	671.699	247.825	51.468	6.122	<b>3.084.965</b>
<b>Média Ponderada</b>	1	2	3	4	5	6	7	<b>3</b>
<b>Porcentagem</b>	9,42%	24,71%	34,20%	21,77%	8,03%	1,67%	0,20%	<b>100,00%</b>

### MATURIDADE (MAT)



	ABAIXO DE 0.65	DE 0.65 A 0.69	DE 0.70 A 0.79	DE 0.80 A 0.84	DE 0.85 A 0.87	DE 0.88 A 0.99	DE 1.00 ACIMA	TOTAL GERAL
<b>Fardos</b>	0	0	36	4.017	2.493.819	587.093	0	<b>3.084.965</b>
<b>Média Ponderada</b>	0,00	0,00	0,78	0,84	0,87	0,88	0,00	<b>0,87</b>
<b>Porcentagem</b>	0,00%	0,00%	0,00%	0,13%	80,84%	19,03%	0,00%	<b>100,00%</b>

### ÍNDICE DE FIABILIDADE (SCI)



	ABAIXO DE 100.00	DE 100.00 A 109.99	DE 110.00 A 119.99	DE 120.00 A 129.99	DE 130.00 A 139.99	DE 140.00 A 149.99	DE 150.00 ACIMA	TOTAL GERAL
<b>Fardos</b>	11.957	184.918	812.786	1.211.663	693.113	159.855	10.673	<b>3.084.965</b>
<b>Média Ponderada</b>	96	106	115	124	134	143	152	<b>124</b>
<b>Porcentagem</b>	0,39%	5,99%	26,35%	39,28%	22,47%	5,18%	0,35%	<b>100,00%</b>