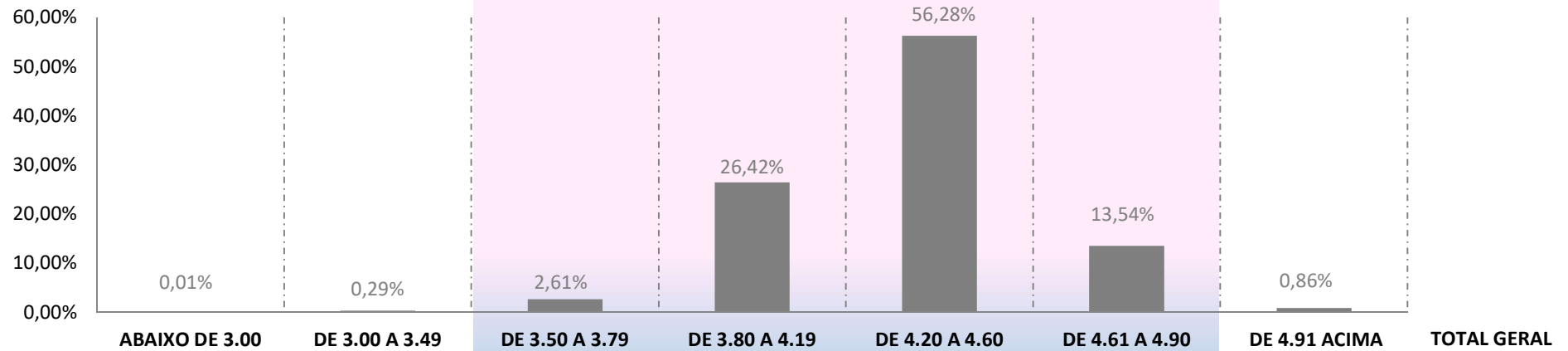
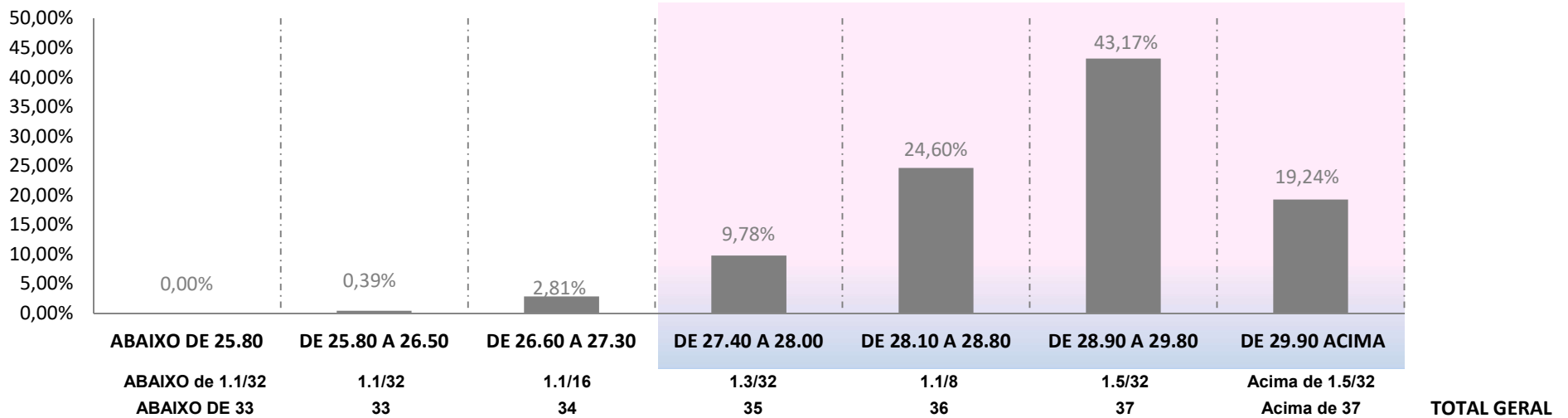


MICRONAIRE $\mu\text{g} / \text{pol}^2$ (MIC)



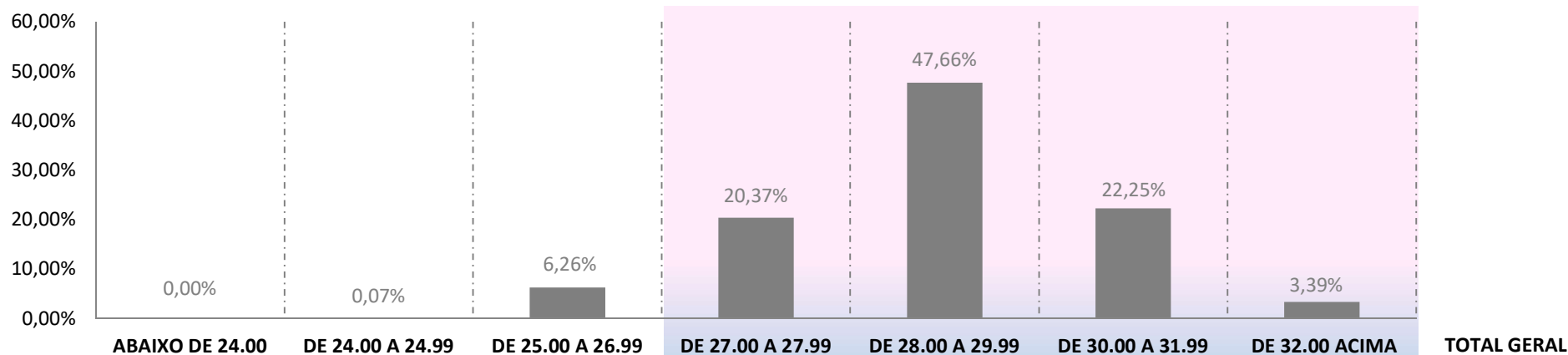
Fardos	158	8.798	78.649	795.731	1.695.101	407.866	25.852	3.012.155
Média Ponderada	2,72	3,36	3,68	4,05	4,38	4,72	4,98	4,33
Porcentagem	0,01%	0,29%	2,61%	26,42%	56,28%	13,54%	0,86%	100,00%

COMPRIMENTO mm (LEN)



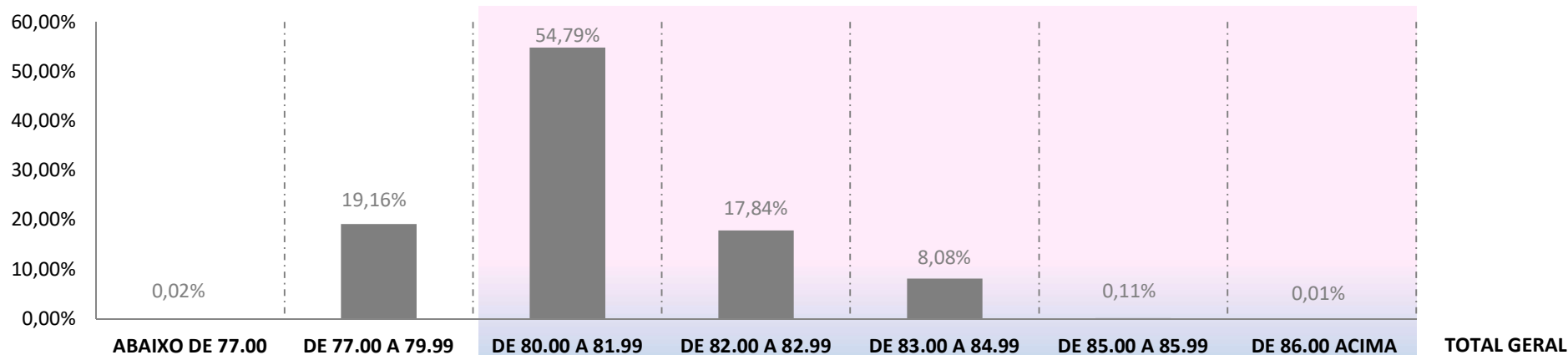
Fardos	32	11.815	84.684	294.684	740.999	1.300.268	579.673	3.012.155
Média Ponderada	25,65	26,38	27,08	27,78	28,54	29,38	30,34	29,13
Porcentagem	0,00%	0,39%	2,81%	9,78%	24,60%	43,17%	19,24%	100,00%

RESISTÊNCIA gf/tex (STR)



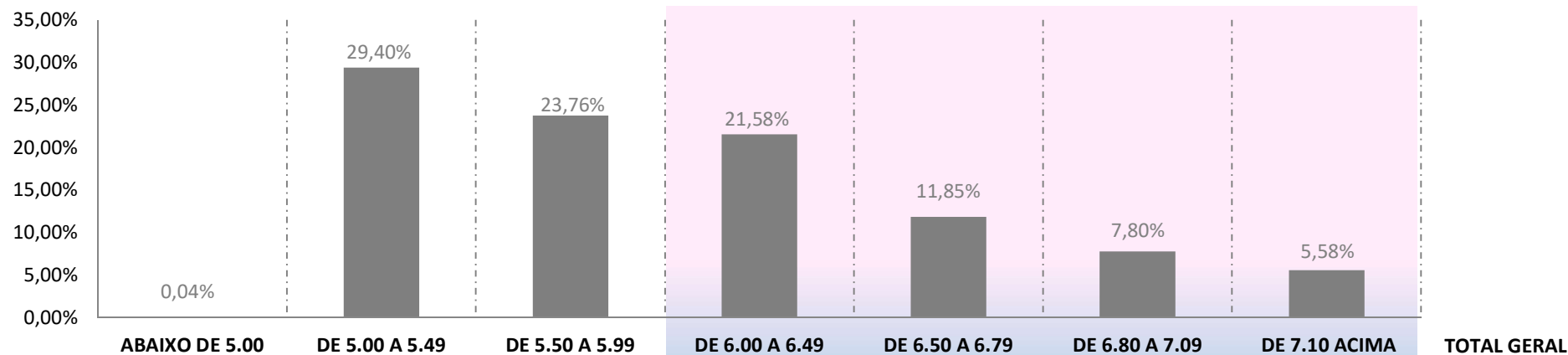
Fardos	71	2.169	188.590	613.516	1.435.580	670.200	102.029	3.012.155
Média Ponderada	23,4	24,5	26,3	27,4	28,9	30,7	32,6	29,0
Porcentagem	0,00%	0,07%	6,26%	20,37%	47,66%	22,25%	3,39%	100,00%

UNIFORMIDADE % (UNF)



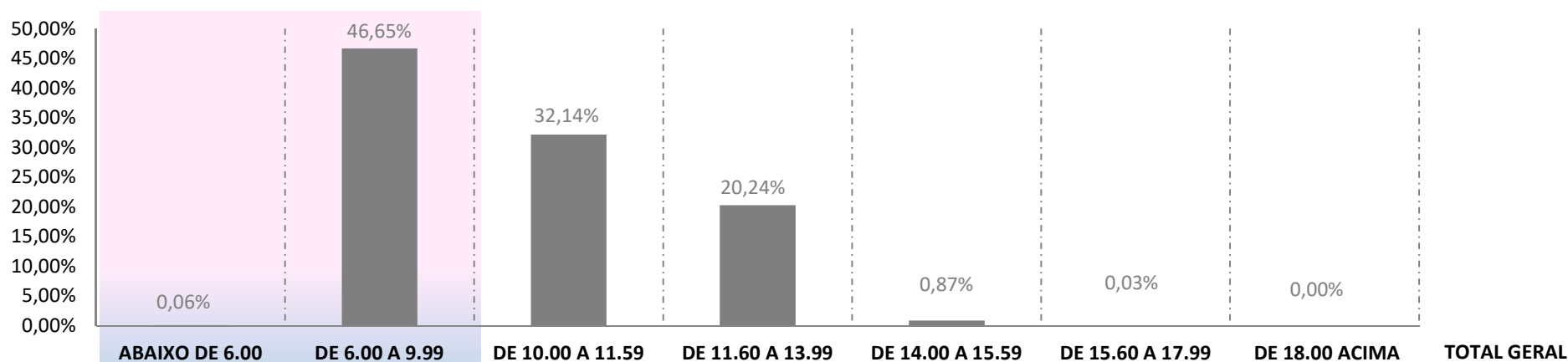
Fardos	560	576.984	1.650.265	537.295	243.411	3.247	393	3.012.155
Média Ponderada	76,3	79,1	80,9	82,4	83,5	85,3	86,5	81,1
Porcentagem	0,02%	19,16%	54,79%	17,84%	8,08%	0,11%	0,01%	100,00%

ALONGAMENTO % (ELG)



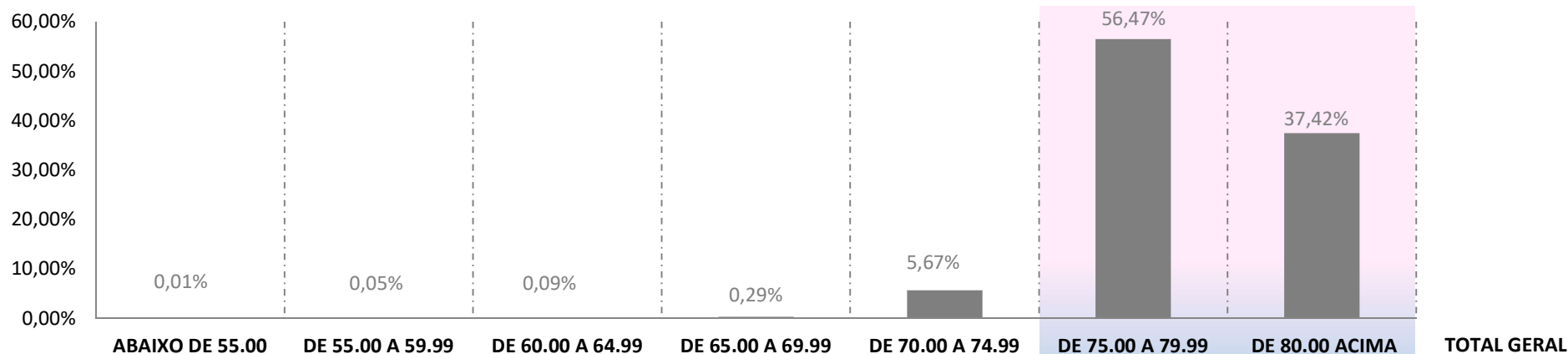
Fardos	1.221	885.467	715.694	649.894	356.921	234.805	168.153	3.012.155
Média Ponderada	4,7	5,2	5,7	6,2	6,6	6,9	7,3	6,0
Porcentagem	0,04%	29,40%	23,76%	21,58%	11,85%	7,80%	5,58%	100,00%

ÍNDICE DE FIBRAS CURTAS % (SFI)



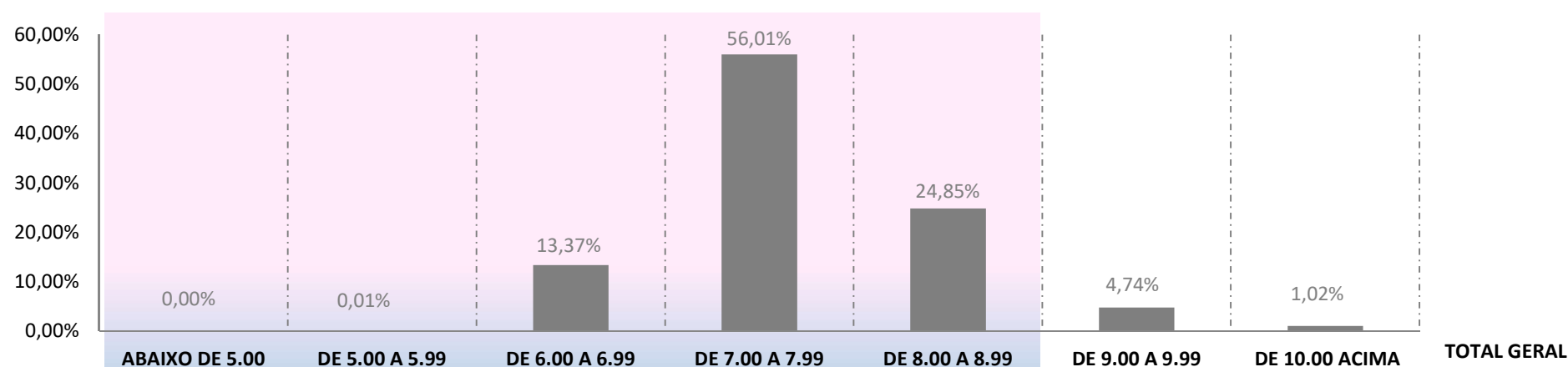
Fardos	1.776	1.405.117	968.244	609.776	26.294	945	3	3.012.155
Média Ponderada	5,6	8,8	10,7	12,4	14,5	15,9	18,8	10,2
Porcentagem	0,06%	46,65%	32,14%	20,24%	0,87%	0,03%	0,00%	100,00%

GRAU DE REFLECTÂNCIA % (RD)



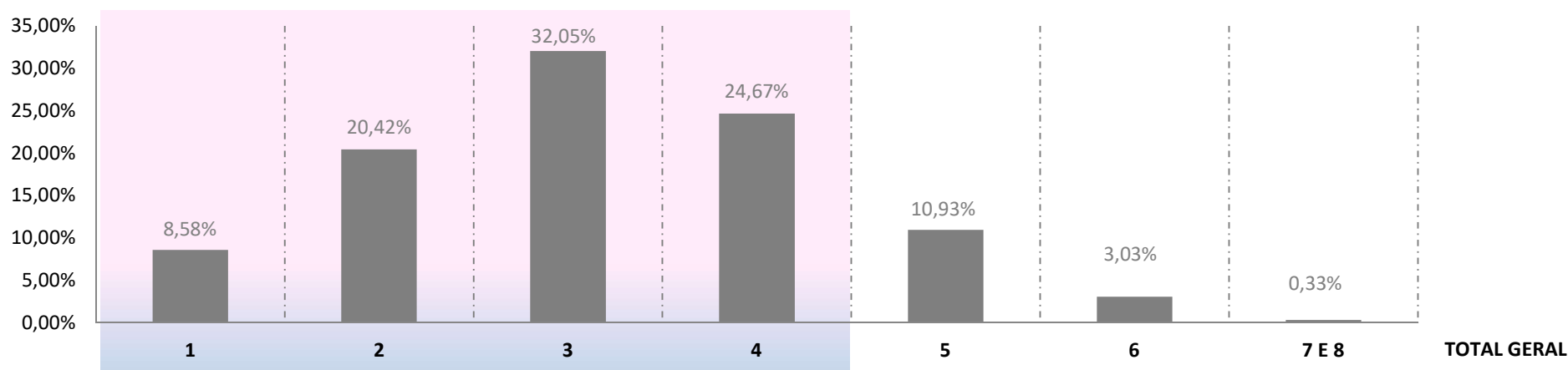
	ABAIXO DE 55.00	DE 55.00 A 59.99	DE 60.00 A 64.99	DE 65.00 A 69.99	DE 70.00 A 74.99	DE 75.00 A 79.99	DE 80.00 ACIMA	TOTAL GERAL
Fardos	181	1.586	2.569	8.795	170.907	1.700.979	1.127.138	3.012.155
Média Ponderada	53,4	57,8	62,6	68,2	73,6	78,0	81,5	79,0
Porcentagem	0,01%	0,05%	0,09%	0,29%	5,67%	56,47%	37,42%	100,00%

GRAU DE AMARELAMENTO (+B)



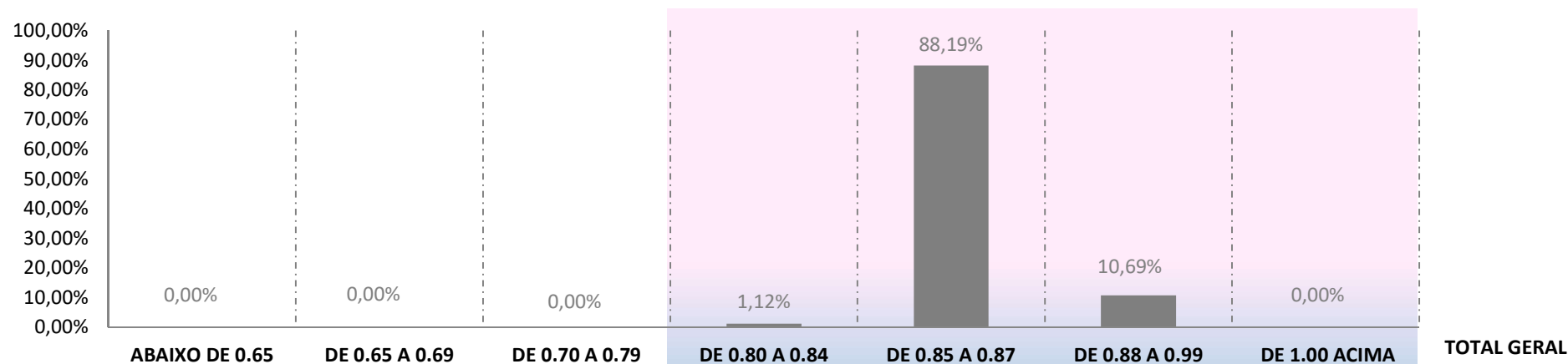
	ABAIXO DE 5.00	DE 5.00 A 5.99	DE 6.00 A 6.99	DE 7.00 A 7.99	DE 8.00 A 8.99	DE 9.00 A 9.99	DE 10.00 ACIMA	TOTAL GERAL
Fardos	10	338	402.854	1.687.081	748.416	142.818	30.638	3.012.155
Média Ponderada	4,8	5,6	6,7	7,5	8,3	9,3	10,8	7,7
Porcentagem	0,00%	0,01%	13,37%	56,01%	24,85%	4,74%	1,02%	100,00%

GRAU DE FOLHA (LEAF)



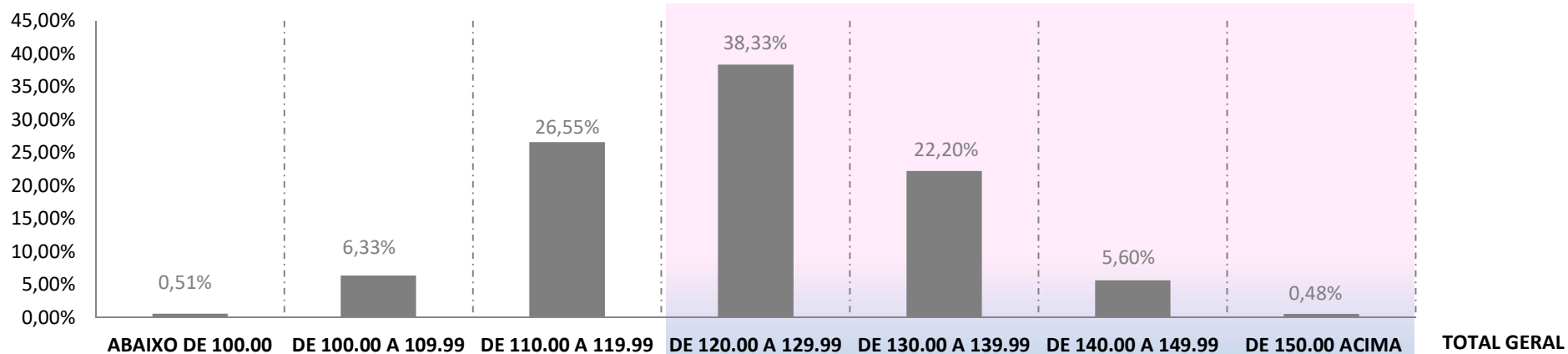
	1	2	3	4	5	6	7 E 8	TOTAL GERAL
Fardos	258.562	614.954	965.264	743.043	329.132	91.236	9.964	3.012.155
Média Ponderada	1	2	3	4	5	6	7	3
Porcentagem	8,58%	20,42%	32,05%	24,67%	10,93%	3,03%	0,33%	100,00%

MATURIDADE (MAT)



	0	0	18	33.784	2.656.443	321.910	0	TOTAL GERAL
Fardos	0	0	18	33.784	2.656.443	321.910	0	3.012.155
Média Ponderada	0,00	0,00	0,78	0,84	0,86	0,88	0,00	0,86
Porcentagem	0,00%	0,00%	0,00%	1,12%	88,19%	10,69%	0,00%	100,00%

ÍNDICE DE FIABILIDADE (SCI)



	ABAIXO DE 100.00	DE 100.00 A 109.99	DE 110.00 A 119.99	DE 120.00 A 129.99	DE 130.00 A 139.99	DE 140.00 A 149.99	DE 150.00 ACIMA	TOTAL GERAL
Fardos	15.480	190.760	799.745	1.154.645	668.622	168.555	14.347	3.012.154
Média Ponderada	97	106	115	124	134	143	153	124
Porcentagem	0,51%	6,33%	26,55%	38,33%	22,20%	5,60%	0,48%	100,00%