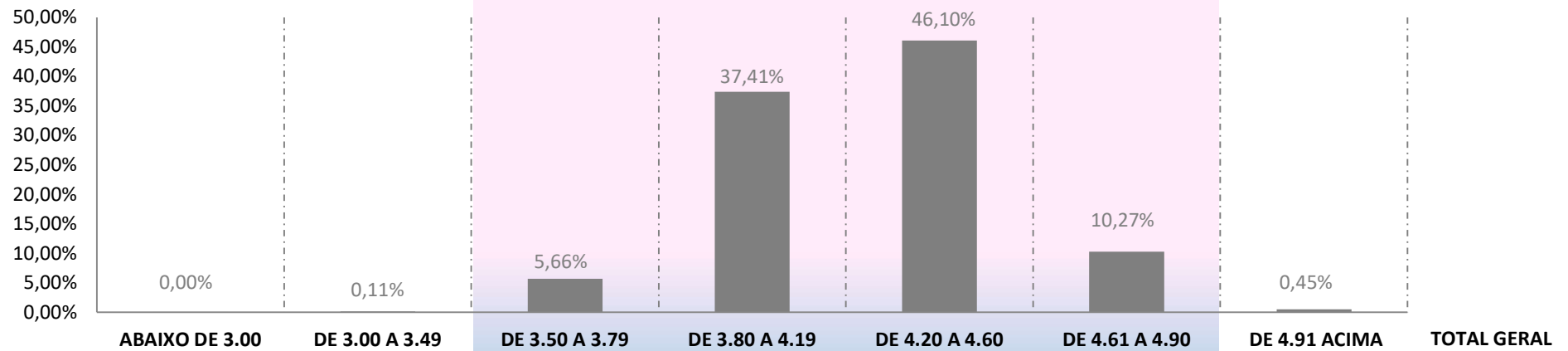
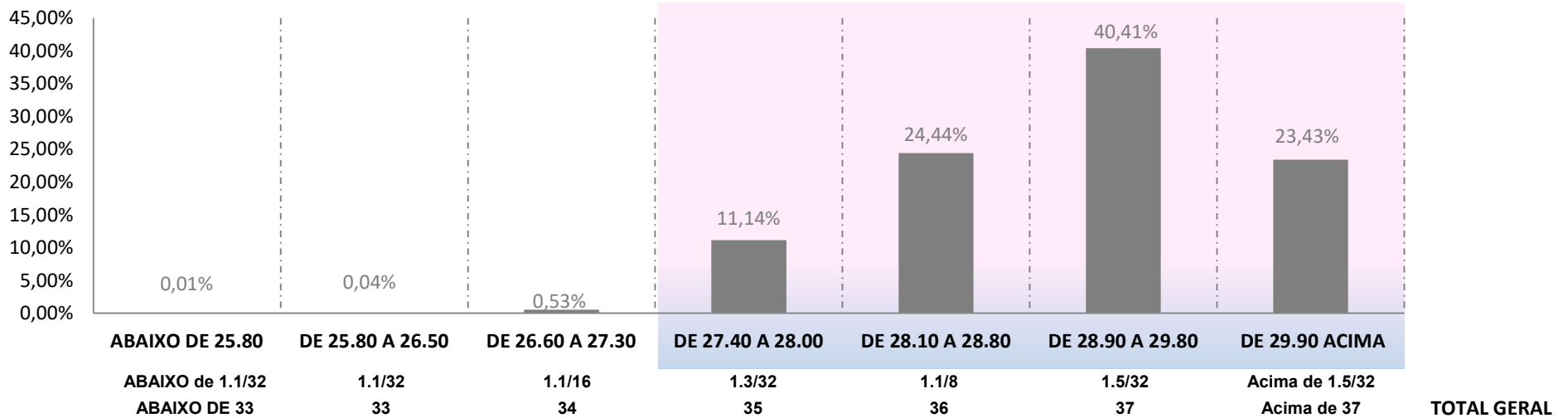


MICRONAIRE $\mu\text{g} / \text{pol}^2$ (MIC)



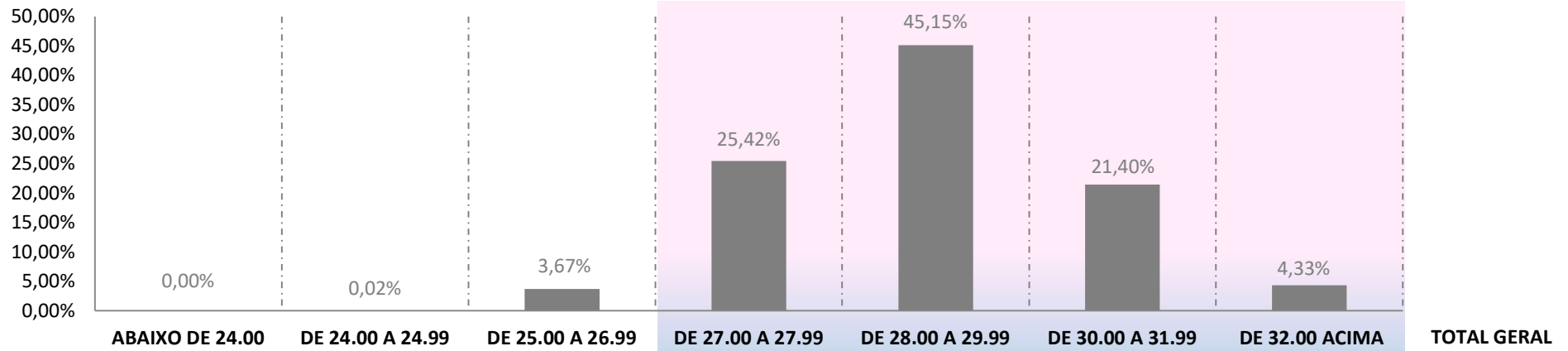
Fardos	2	3.817	201.048	1.329.405	1.638.216	364.891	16.005	3.553.384
Média Ponderada	2,79	3,42	3,68	4,03	4,37	4,73	5,01	4,25
Porcentagem	0,00%	0,11%	5,66%	37,41%	46,10%	10,27%	0,45%	100,00%

COMPRIMENTO mm (LEN)



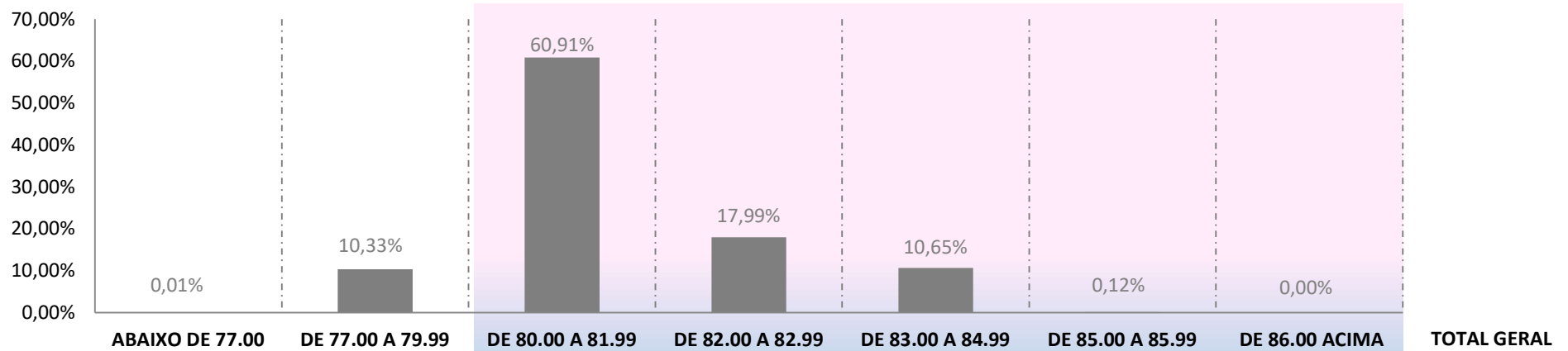
Fardos	474	1.520	18.689	395.940	868.561	1.435.762	832.438	3.553.384
Média Ponderada	25,19	26,32	27,14	27,78	28,54	29,38	30,42	29,23
Porcentagem	0,01%	0,04%	0,53%	11,14%	24,44%	40,41%	23,43%	100,00%

RESISTÊNCIA gf/tex (STR)



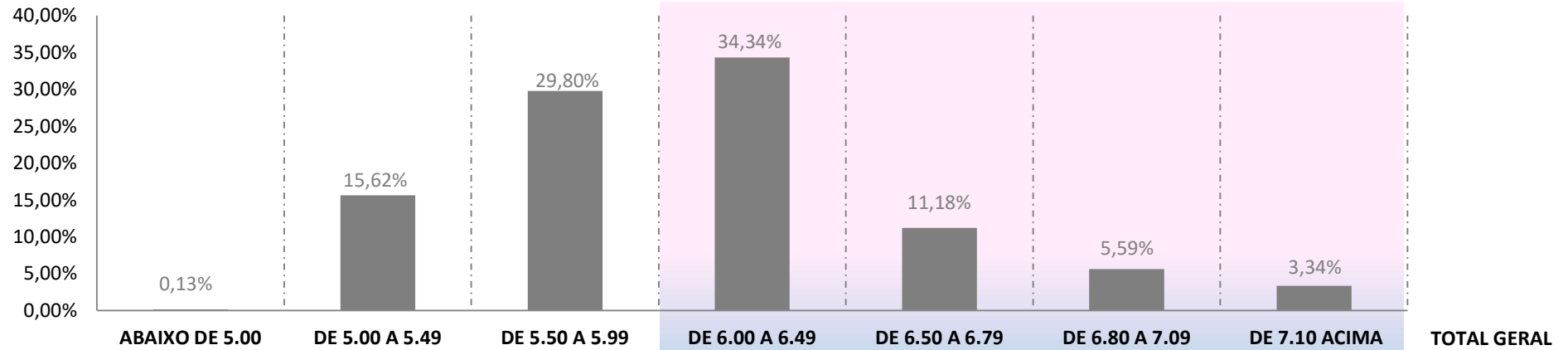
	ABAIXO DE 24.00	DE 24.00 A 24.99	DE 25.00 A 26.99	DE 27.00 A 27.99	DE 28.00 A 29.99	DE 30.00 A 31.99	DE 32.00 ACIMA	TOTAL GERAL
Fardos	33	764	130.363	903.399	1.604.463	760.599	153.763	3.553.384
Média Ponderada	22,1	24,5	26,4	27,4	28,9	30,8	32,5	29,0
Porcentagem	0,00%	0,02%	3,67%	25,42%	45,15%	21,40%	4,33%	100,00%

UNIFORMIDADE % (UNF)



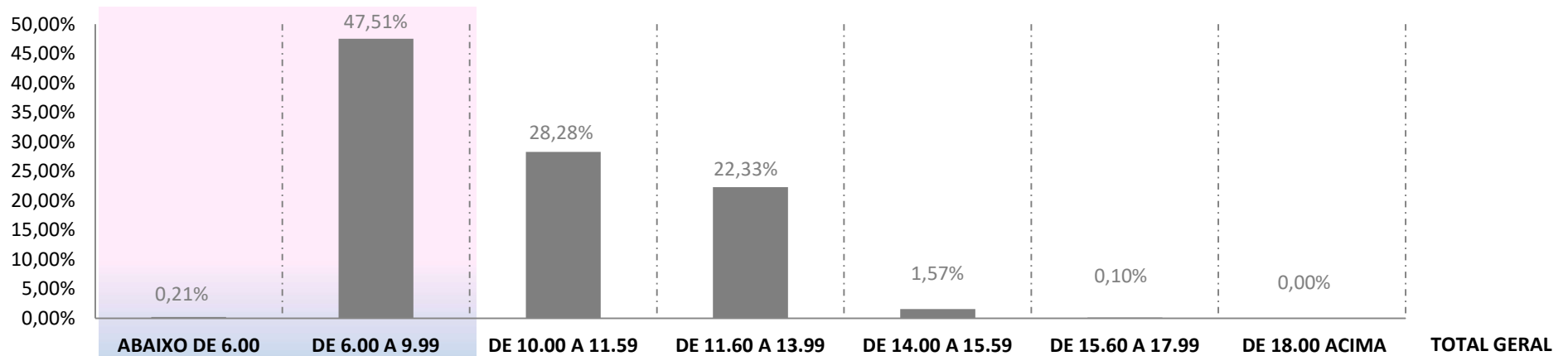
	ABAIXO DE 77.00	DE 77.00 A 79.99	DE 80.00 A 81.99	DE 82.00 A 82.99	DE 83.00 A 84.99	DE 85.00 A 85.99	DE 86.00 ACIMA	TOTAL GERAL
Fardos	442	366.900	2.164.298	639.137	378.325	4.204	78	3.553.384
Média Ponderada	76,4	79,1	80,8	82,4	83,6	85,4	86,3	81,2
Porcentagem	0,01%	10,33%	60,91%	17,99%	10,65%	0,12%	0,00%	100,00%

ALONGAMENTO % (ELG)



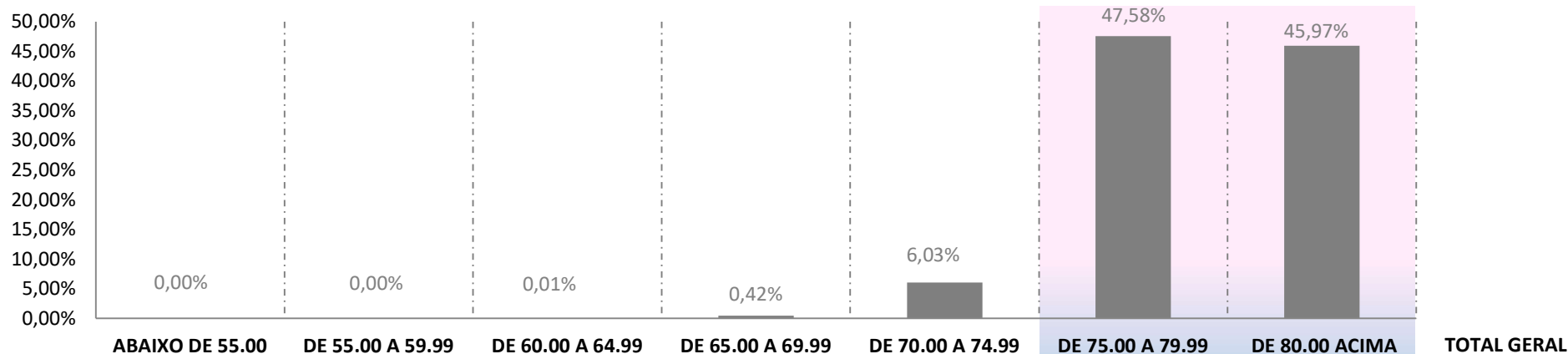
Fardos	4.740	555.014	1.058.751	1.220.079	397.289	198.741	118.770	3.553.384
Média Ponderada	4,9	5,2	5,7	6,2	6,6	6,9	7,3	6,0
Porcentagem	0,13%	15,62%	29,80%	34,34%	11,18%	5,59%	3,34%	100,00%

ÍNDICE DE FIBRAS CURTAS % (SFI)



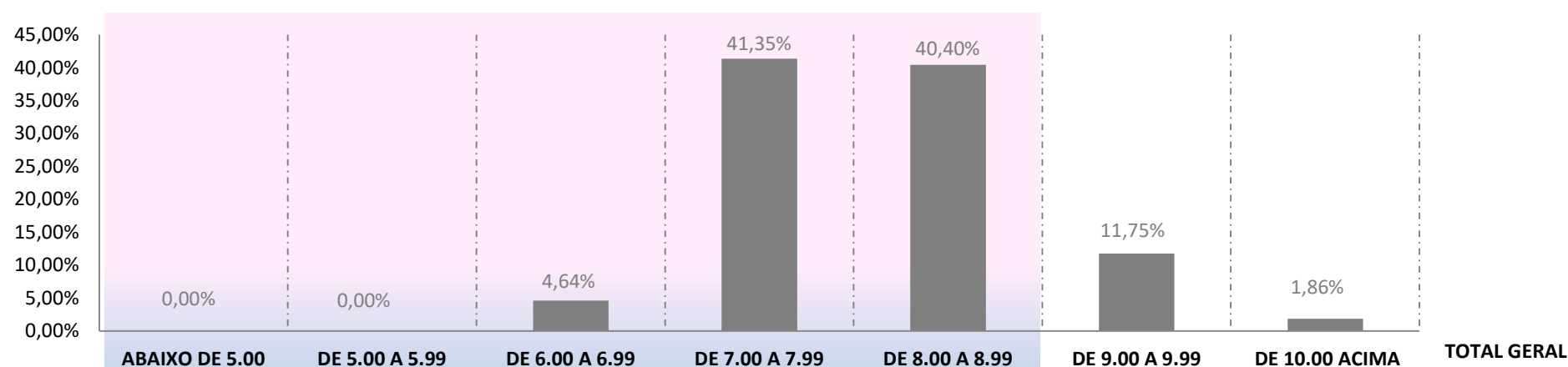
Fardos	7.441	1.688.139	1.004.966	793.465	55.631	3.703	39	3.553.384
Média Ponderada	5,5	8,9	10,7	12,4	14,5	15,9	19,3	10,3
Porcentagem	0,21%	47,51%	28,28%	22,33%	1,57%	0,10%	0,00%	100,00%

GRAU DE REFLECTÂNCIA % (RD)



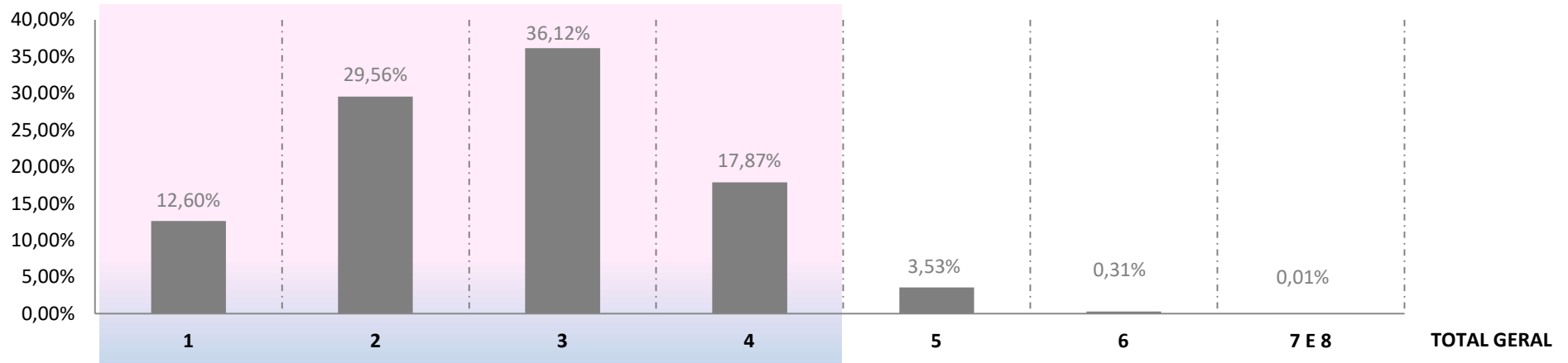
	ABAIXO DE 55.00	DE 55.00 A 59.99	DE 60.00 A 64.99	DE 65.00 A 69.99	DE 70.00 A 74.99	DE 75.00 A 79.99	DE 80.00 ACIMA	TOTAL GERAL
Fardos	18	30	375	14.883	214.101	1.690.636	1.633.341	3.553.384
Média Ponderada	53,3	57,8	63,4	68,7	73,4	78,2	81,3	79,3
Porcentagem	0,00%	0,00%	0,01%	0,42%	6,03%	47,58%	45,97%	100,00%

GRAU DE AMARELAMENTO (+B)



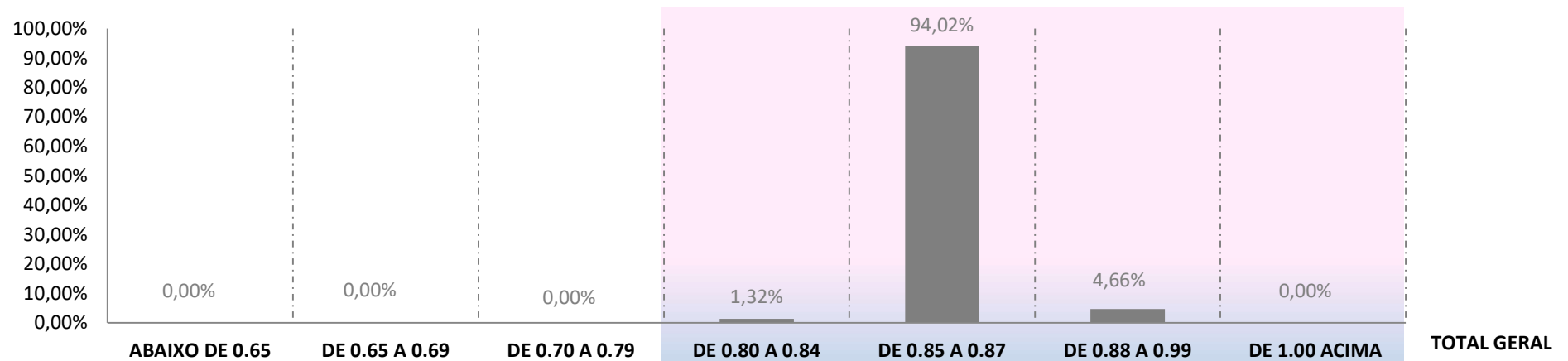
	ABAIXO DE 5.00	DE 5.00 A 5.99	DE 6.00 A 6.99	DE 7.00 A 7.99	DE 8.00 A 8.99	DE 9.00 A 9.99	DE 10.00 ACIMA	TOTAL GERAL
Fardos	1	41	164.857	1.469.190	1.435.608	417.491	66.196	3.553.384
Média Ponderada	4,0	5,8	6,7	7,5	8,4	9,3	10,4	8,1
Porcentagem	0,00%	0,00%	4,64%	41,35%	40,40%	11,75%	1,86%	100,00%

GRAU DE FOLHA (LEAF)



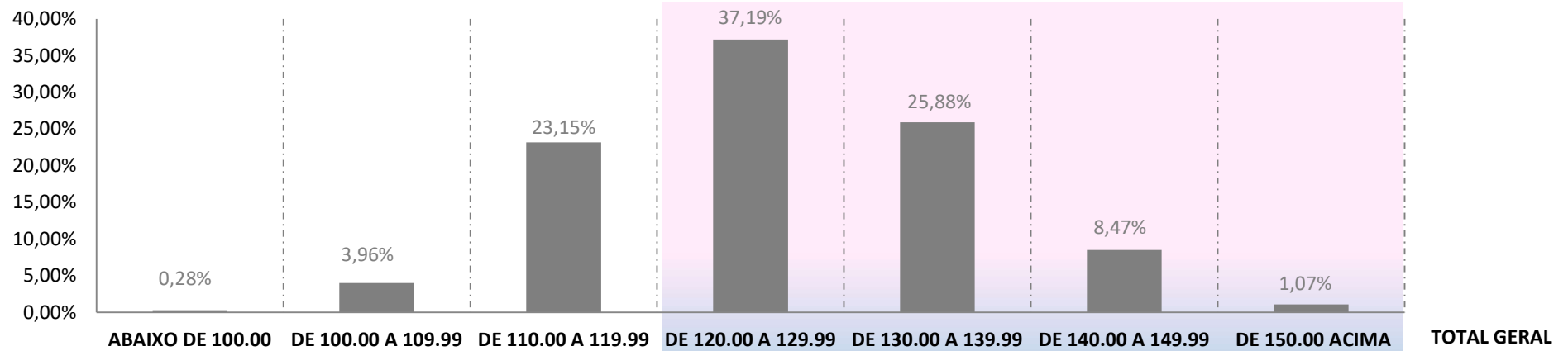
	1	2	3	4	5	6	7 E 8	TOTAL GERAL
Fardos	447.781	1.050.497	1.283.492	634.877	125.476	10.879	382	3.553.384
Média Ponderada	1	2	3	4	5	6	7	3
Porcentagem	12,60%	29,56%	36,12%	17,87%	3,53%	0,31%	0,01%	100,00%

MATURIDADE (MAT)



	0	0	126	46.896	3.340.919	165.443	0	TOTAL GERAL
Fardos	0	0	126	46.896	3.340.919	165.443	0	3.553.384
Média Ponderada	0,00	0,00	0,78	0,84	0,86	0,88	0,00	0,86
Porcentagem	0,00%	0,00%	0,00%	1,32%	94,02%	4,66%	0,00%	100,00%

ÍNDICE DE FIABILIDADE (SCI)



	ABAIXO DE 100.00	DE 100.00 A 109.99	DE 110.00 A 119.99	DE 120.00 A 129.99	DE 130.00 A 139.99	DE 140.00 A 149.99	DE 150.00 ACIMA	TOTAL GERAL
Fardos	9.782	140.726	822.739	1.321.635	919.597	300.992	37.913	3.553.384
Média Ponderada	97	106	116	124	134	143	153	126
Porcentagem	0,28%	3,96%	23,15%	37,19%	25,88%	8,47%	1,07%	100,00%